

apex
ON DONALDSON





40 Donaldson Street, Greenslopes QLD

Proudly Developed by Mosaic Property Group  mosaic
PROPERTY GROUP™





A THANK YOU MESSAGE FROM OUR MANAGING DIRECTOR

'I would like to personally congratulate you.'

CONGRATULATIONS ON THE SETTLEMENT OF YOUR BEAUTIFUL NEW APARTMENT. ALTHOUGH THE BUILDING IS NOW COMPLETE, OUR COMMITMENT TO YOU IS FAR FROM OVER.

The completion of a Mosaic project is always an exciting time for everyone and you are now the proud owner of a high quality apartment in a stunning building. Every member of the Mosaic team has worked hard to have some involvement and impact on the project, eagerly monitoring the project's evolution. But now it's time for us to hand over the ownership of a building that we have loved since it was merely a set of concept plans and a vacant block of land.

For us, the commitment to our clients certainly doesn't stop at settlement. We will continue to closely monitor and track the building and landscaping over the next 12 months, ensuring everything is settling as it should and rectifying any unforeseen issues that may arise, if required. As we maintain the management rights for all our developments, Mosaic will be there for the life of the building, ensuring it is well maintained, remains in the best possible condition and your investment is protected for many years to come.

And of course, should you have questions about anything at all, whether it is now, or in 1, 2 or 5 years' time, we are always here to assist.

Thanks again for your support of Mosaic.

Book

'THE EVOLUTION OF APEX'



Original Artists
Impressions



'THE EVOLUTION OF APEX'



Construction Update
One – February 2016

DEMOLITION WORKS WERE CONDUCTED

then utilities connected and the new site office set up, as well as establishing sediment and erosion control measures.

The bulk earthworks were well underway with a large 32 tonne excavator making great progress with excavations works.



'THE EVOLUTION OF APEX CONTINUES'



Construction Update
Two – March 2016

MOSAIC CONSTRUCTION MADE IMPRESSIVE PROGRESS ON SITE.
The bulk earthworks, ground floor blockwork and a large portion of the strip footings were completed.



'THE EVOLUTION OF APEX CONTINUES'



Construction Update
Three - April 2016

TWO IMPORTANT PROJECT MILESTONES WERE REACHED,
the first being the completion of the ground floor slab which creates the Level 1 apartment and the carpark for the complex.



'THE EVOLUTION OF APEX CONTINUES'



Construction Update
Four – May 2016

THE BUILDING WENT UP A LEVEL, AS THE LEVEL 3 SLAB WAS COMPLETED ALLOWING the internal and external walls to create six Level 3 apartments. Works continued to the lower apartments.



'THE EVOLUTION OF APEX CONTINUES'



Construction Update
Five – June 2016

THE LAST SUSPENDED CONCRETE SLAB WAS COMPLETED AFTER A MONTH OF OUTSTANDING PROGRESS. Blockwork was completed for Level 4, while a start was made on the internal framework for Level 2 apartments.



'THE EVOLUTION OF APEX CONTINUES'



Construction Update
Six - July 2016

WITH APEX ON DONALDSON NOW "TOPPED OUT", the focus shifted to the apartment internals allowing framing, service rough-ins and sheeting to commence. Rendering of the external blockwork walls of the building and lobby area was also half completed.



'THE EVOLUTION OF APEX CONTINUES'



Construction Update
Seven - August 2016

INTERNALS AND EXTERNALS OF THE BUILDING RECEIVED ATTENTION, with more painting and rendering inside and out, and the kitchen and bathroom cabinetry for the ground level and Level 1 apartments completed.



'THE EVOLUTION OF APEX CONTINUES'



Construction Update
Eight – September 2016

IT WAS ANOTHER BUSY MONTH ON SITE WITH THE MOSAIC CONSTRUCTION TEAM PROGRESSING FURTHER THAN ANTICIPATED, allowing the completion date to be brought forward. Over the coming month, the construction team completed all externals and internals of the building ensuring all the apartments and building works were finished to the expected Mosaic standard.



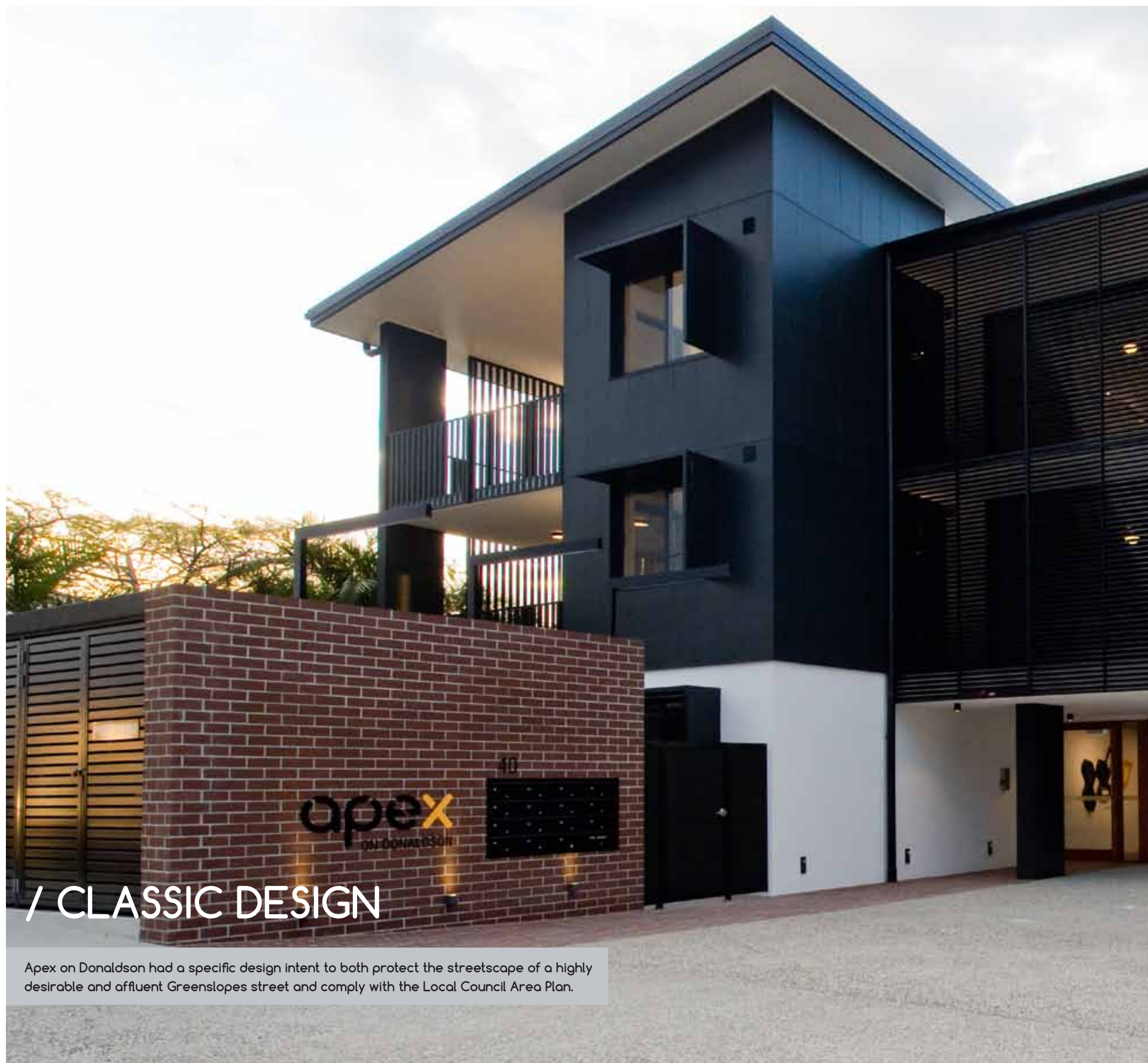
'THE EVOLUTION OF APEX FINAL PRODUCT'



November 2016

THE FINAL PRODUCT IS CLEANED AND POLISHED AND THE FINISHING TOUCHES APPLIED, ready for settlement and handing over to the new owners.





/ CLASSIC DESIGN

Apex on Donaldson had a specific design intent to both protect the streetscape of a highly desirable and affluent Greenslopes street and comply with the Local Council Area Plan.



/ UNIQUE

The building is set on a huge 1,400m² site. With low impact design in mind, Apex is sympathetic to the neighbourhood with only 15 apartments set across 3 levels.

Apex, located in the dress circle of Greenslopes, is only 6km south-east from the Brisbane CBD.



/ TIMELESS APPEAL

The classically designed Apex demonstrates that it's possible to build luxurious and modern apartments in an established suburb and still maintain street integrity.



apex
ON DONALDSON

40

/ PRIVATE

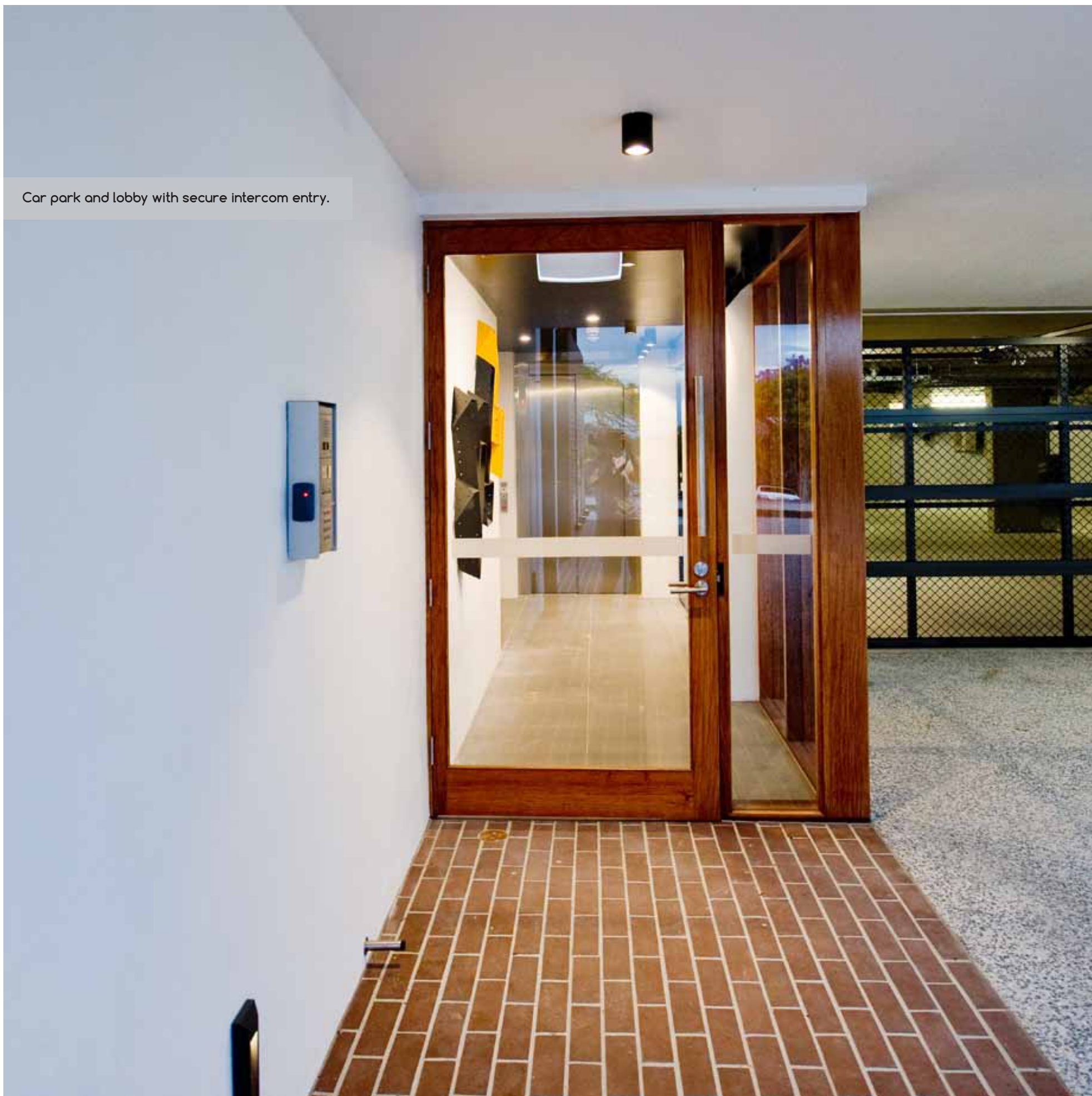
Solar shading was implemented to the western elevation openings to reduce cooling costs and improve privacy for both residents and neighbours.





Cutting-edge contemporary design will stand the test of time.

Car park and lobby with secure intercom entry.





/ EFFICIENT AND SUSTAINABLE

Water storage tanks were installed beneath the driveway in reinforced concrete tanks to ensure the front façade of the building remained open and aesthetically pleasing to the streetscape. Hot water costs reduced through installation of high rated Water Efficiency Labelling Scheme (WELS) fixtures. Low voltage, energy efficient LED lighting used throughout entire building.

/ MODERN





Luxurious and thoughtful lobbies cleverly take design elements from outside and bring them within.



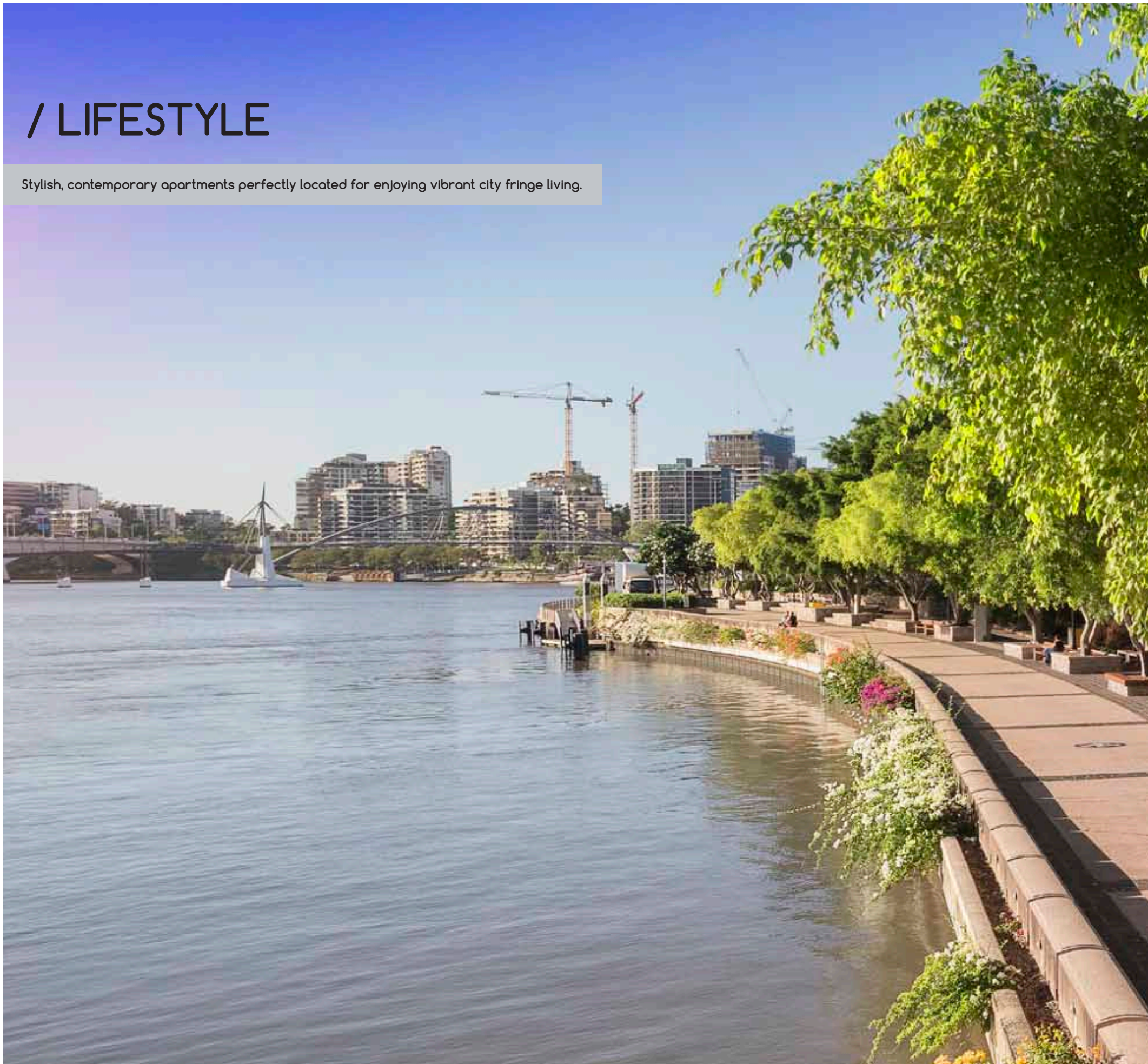
/ OUTLOOK

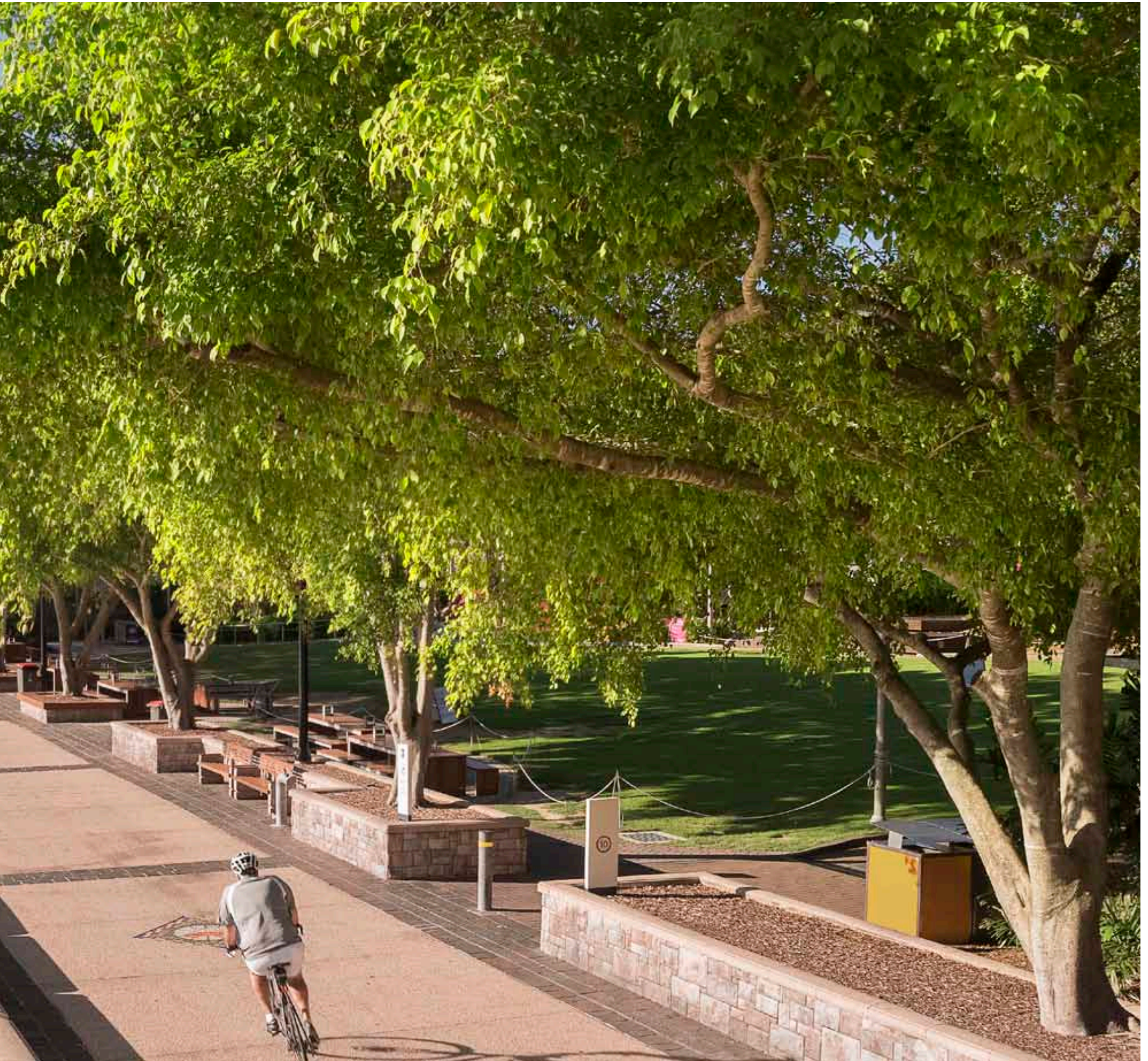
Situated in a wide, leafy street in one of Brisbane's most established suburbs.



/ LIFESTYLE

Stylish, contemporary apartments perfectly located for enjoying vibrant city fringe living.





/ VIBRANT





A large block ensures plenty of room for private and green spaces.



Very spacious and thoughtful open plan layout with ample living dining, and outdoor entertaining areas.

/ SPACIOUS

Higher than average ceiling heights and large opening windows and doors for a more spacious feel.





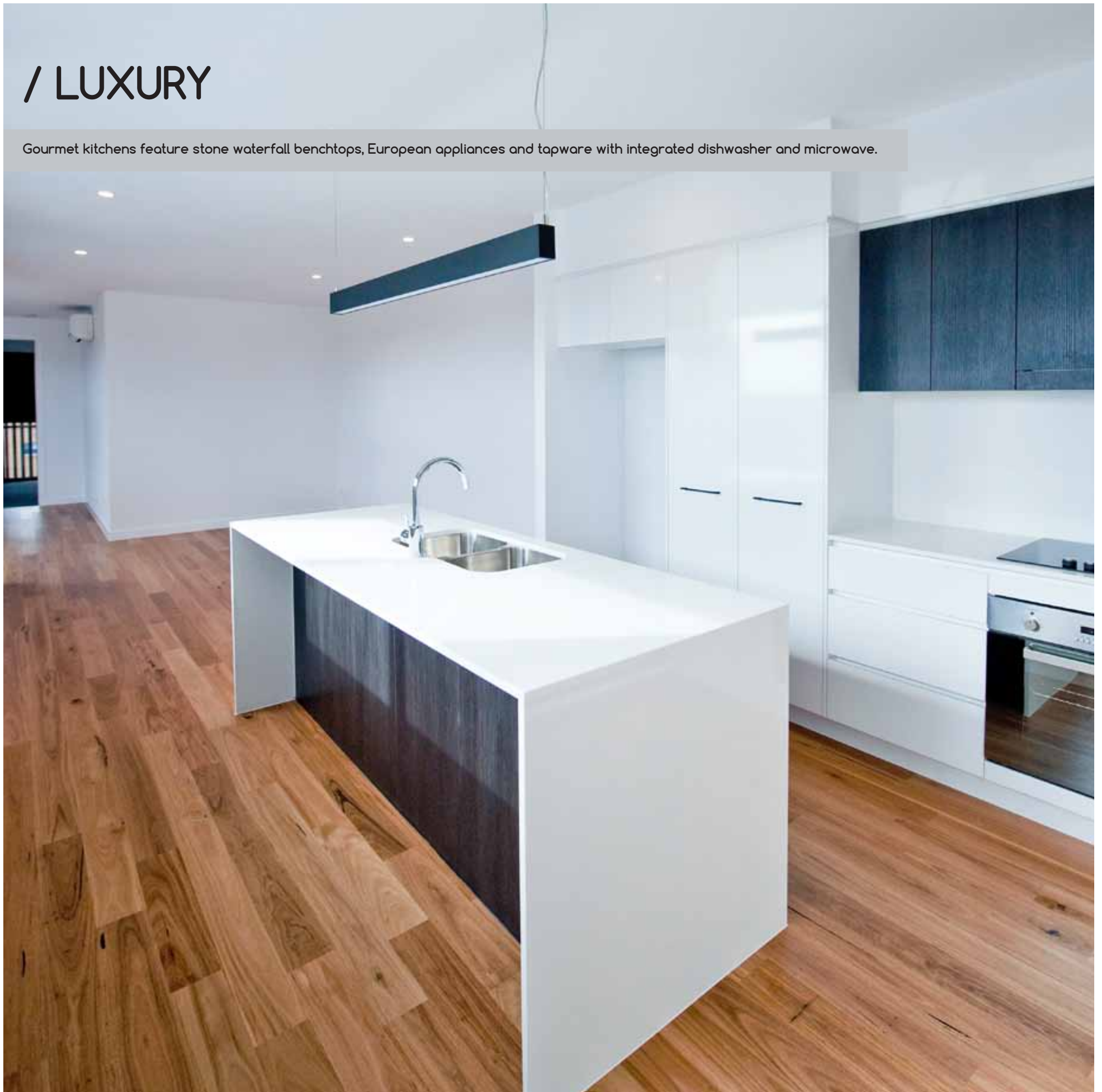
/ ELEGANT

Beautiful polished timber floors flow throughout, connecting living areas.



/ LUXURY

Gourmet kitchens feature stone waterfall benchtops, European appliances and tapware with integrated dishwasher and microwave.





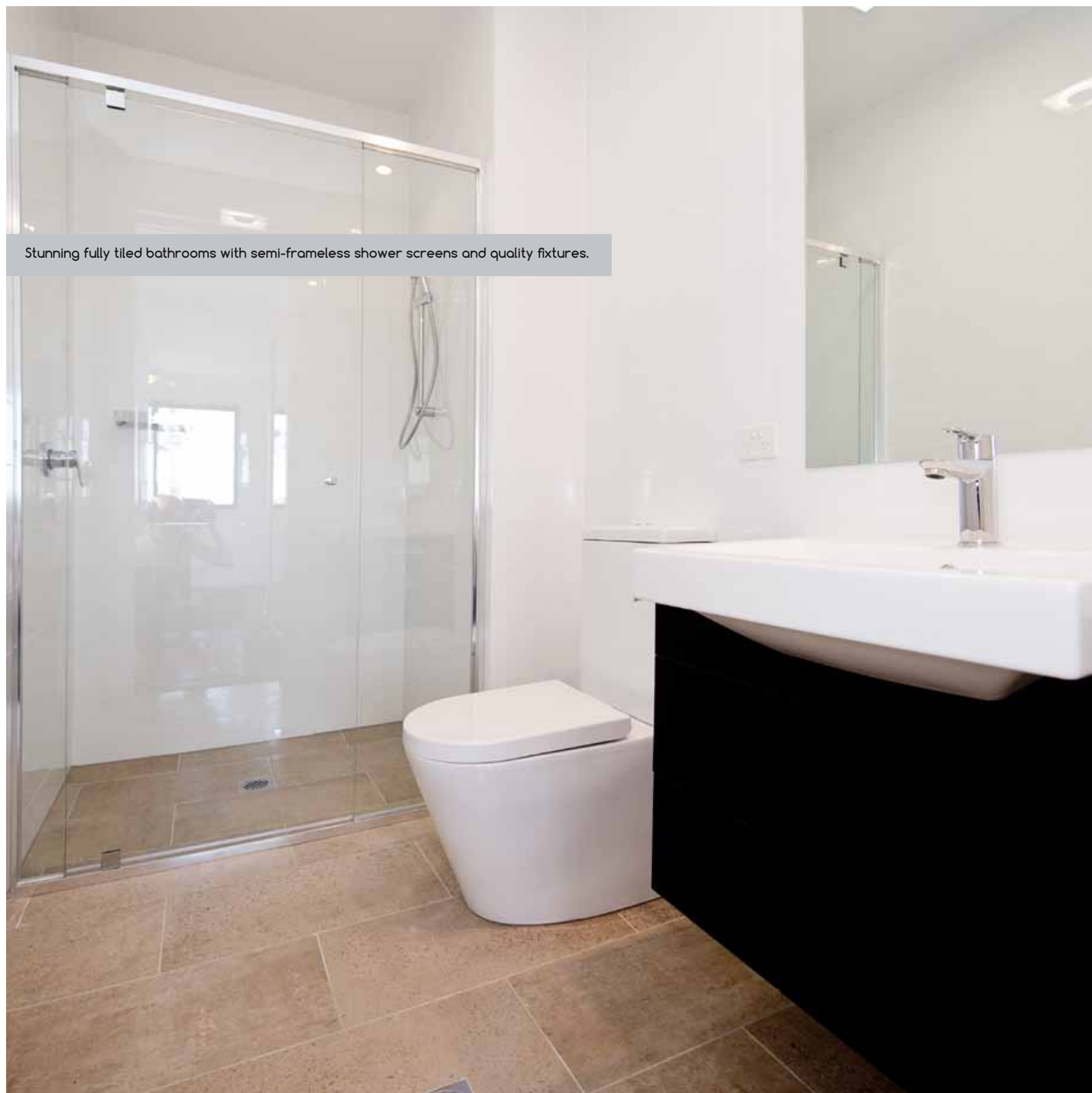
/ OUTDOOR LIVING

Large furnishable balconies create additional living spaces.

/ ENJOYMENT







Stunning fully tiled bathrooms with semi-frameless shower screens and quality fixtures.



/ GENEROUS

Spacious air-conditioned bedrooms with generous walk-in or built-in wardrobes.

/ FEATURES

402



High attention paid to every finer detail for both a stunning finish and functional design.







/ PREMIUM



/ OPEN AND LIGHT

Ample natural light and air flow through open apartments means energy efficient living.







PROUDLY DEVELOPED AND CONSTRUCTED BY:



p 1300 336 989 or 07 3171 2270 **f** 07 3171 2217 **e** info@mosaicproperty.com.au
address 84 Latrobe Terrace, Paddington Q 4064
postal PO Box 526, Paddington Q 4064
w mosaicproperty.com.au

