

RESIDE
BY MOSAIC



24 NORMAN CRESCENT, NORMAN PARK

PROUDLY DEVELOPED BY  **mosaic**
PROPERTY GROUP™



A THANK YOU MESSAGE FROM OUR MANAGING DIRECTOR



'I WOULD LIKE TO PERSONALLY CONGRATULATE YOU!'

CONGRATULATIONS ON THE SETTLEMENT OF YOUR BEAUTIFUL NEW APARTMENT. ALTHOUGH THE BUILDING IS NOW COMPLETE, OUR COMMITMENT TO YOU IS FAR FROM OVER.

The completion of a Mosaic project is always an exciting time for everyone and you are now the proud owner of a quality apartment in a stunning building. Every member of the Mosaic team has worked hard to have some involvement and impact on the project, eagerly monitoring the project's evolution. But now it's time for us to hand over the ownership of a building that we have loved since it was merely a set of concept plans and a vacant block of land.

For us, the commitment to our clients certainly doesn't stop at settlement. We will continue to closely monitor and track the building and landscaping over the next 12 months to ensure everything is settling as it should, as well as rectifying any unforeseen issues, if required. As we maintain the management rights for all our developments, Mosaic will be there for the life of the building, ensuring it is well maintained and kept in the best possible condition, protecting your investment for many years to come.

And of course, should you have questions about anything at all, be it now, or in 1, 2 or 5 years' time, we are always here to assist.

Thanks again for your support of Mosaic.

A handwritten signature in black ink, appearing to read "Bob".



ORIGINAL ARTIST'S IMPRESSION



THE EVOLUTION OF RESIDE



CONSTRUCTION UPDATE / FEBRUARY 2016 /

First on the agenda was to establish the site preliminaries such as temporary power, water, and fencing, followed by establishing sediment and erosion control measures.





CONSTRUCTION UPDATE / MARCH 2016 /

Bulk earthworks for Level 1 were completed, with excavation continuing down to what will become the basement carpark.





CONSTRUCTION UPDATE / APRIL 2016 /

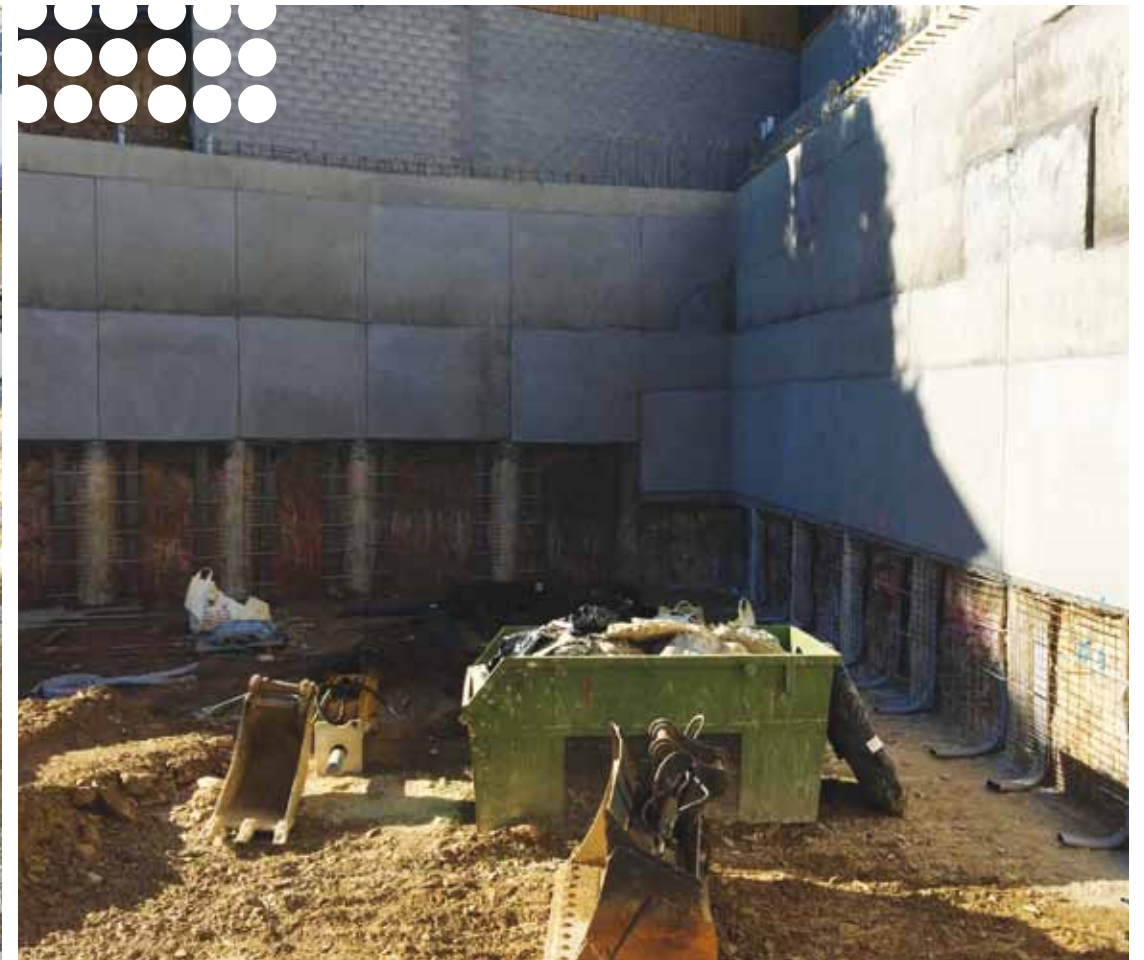
We encountered some hard rock onsite, which slowed progress somewhat and required rippers to break up the material so it could be excavated and removed from site.





CONSTRUCTION UPDATE / MAY 2016 /

Detailed excavation between the piers down to the basement level was followed by the installation of panel drainage and steel reinforcement.





CONSTRUCTION UPDATE / JUNE 2016 /

With this first slab laid, the team could start the installation of acro props and formwork for the first suspended slab, which will form ground level and the entrance to the underground carpark.





CONSTRUCTION UPDATE / JULY 2016 /

All hands on deck as the first suspended slab is poured. Each person has their specific role to ensure the pour goes smoothly and to plan.





CONSTRUCTION UPDATE / AUGUST 2016 /

The last of the ground floor structural columns were filled with concrete before formwork was stripped so that the next suspended slab could be built on top.

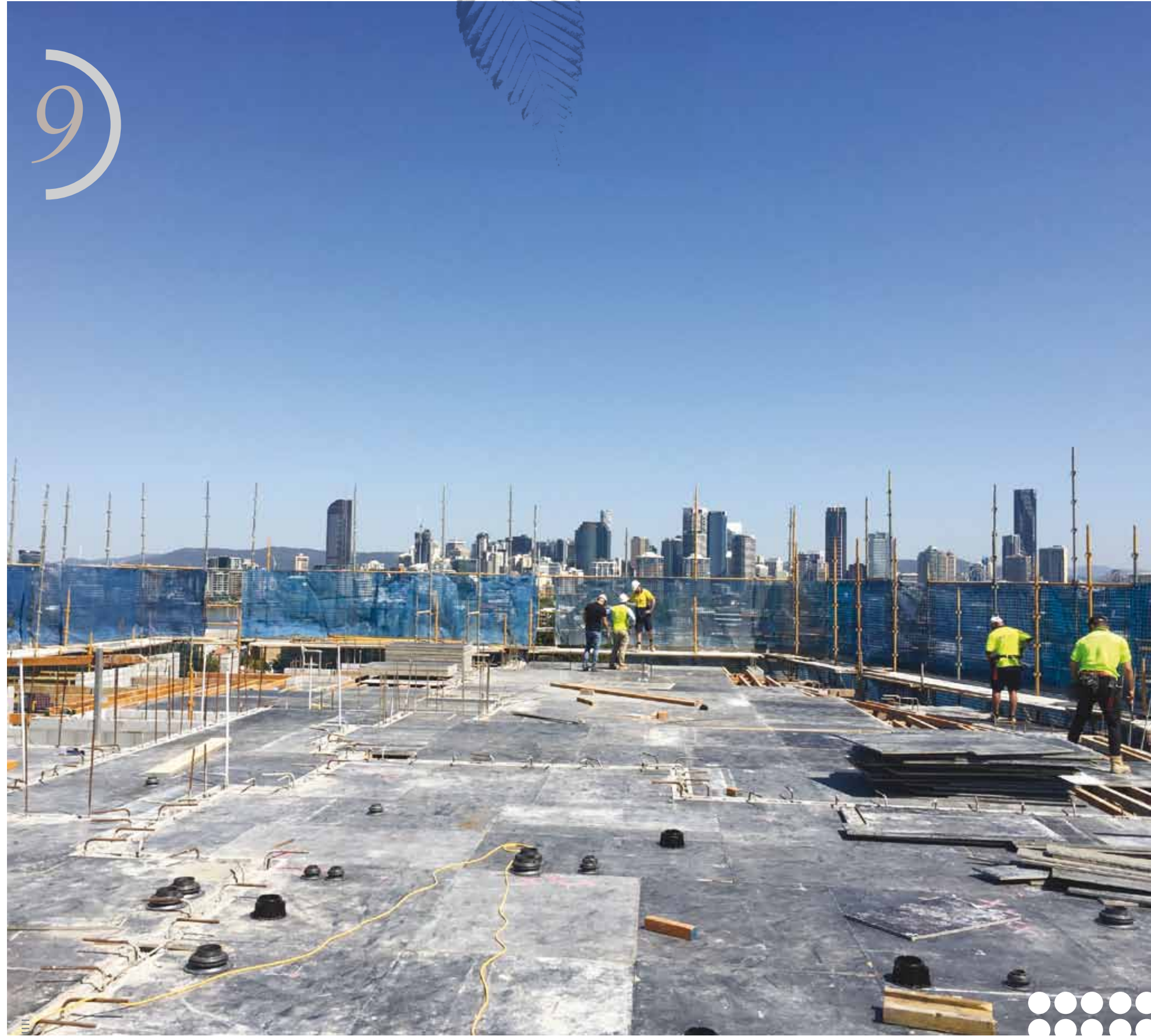




CONSTRUCTION UPDATE / SEPTEMBER 2016 /

Reside continues its steady rise upwards with the completion of the Level 2 and Level 3 suspended slabs during the past month – only two more levels to go!





CONSTRUCTION UPDATE / OCTOBER 2016 /

Internally, apartments are beginning to take shape as the framing of Level 11 nears completion. Plumbing stacks were completed, while electrical and water pipework rough-ins are underway.



10



CONSTRUCTION UPDATE / NOVEMBER 2016 /

Another milestone was reached by Mosaic Construction at Reside this month as the final suspended slab was poured and the blockwork laid to Level 5, "topping out" the building.





CONSTRUCTION UPDATE / DECEMBER 2016 /

Despite some pretty extreme weather over the past month, work on our Norman Park site has continued to progress well, with internal works gathering pace and the roof installation well underway.



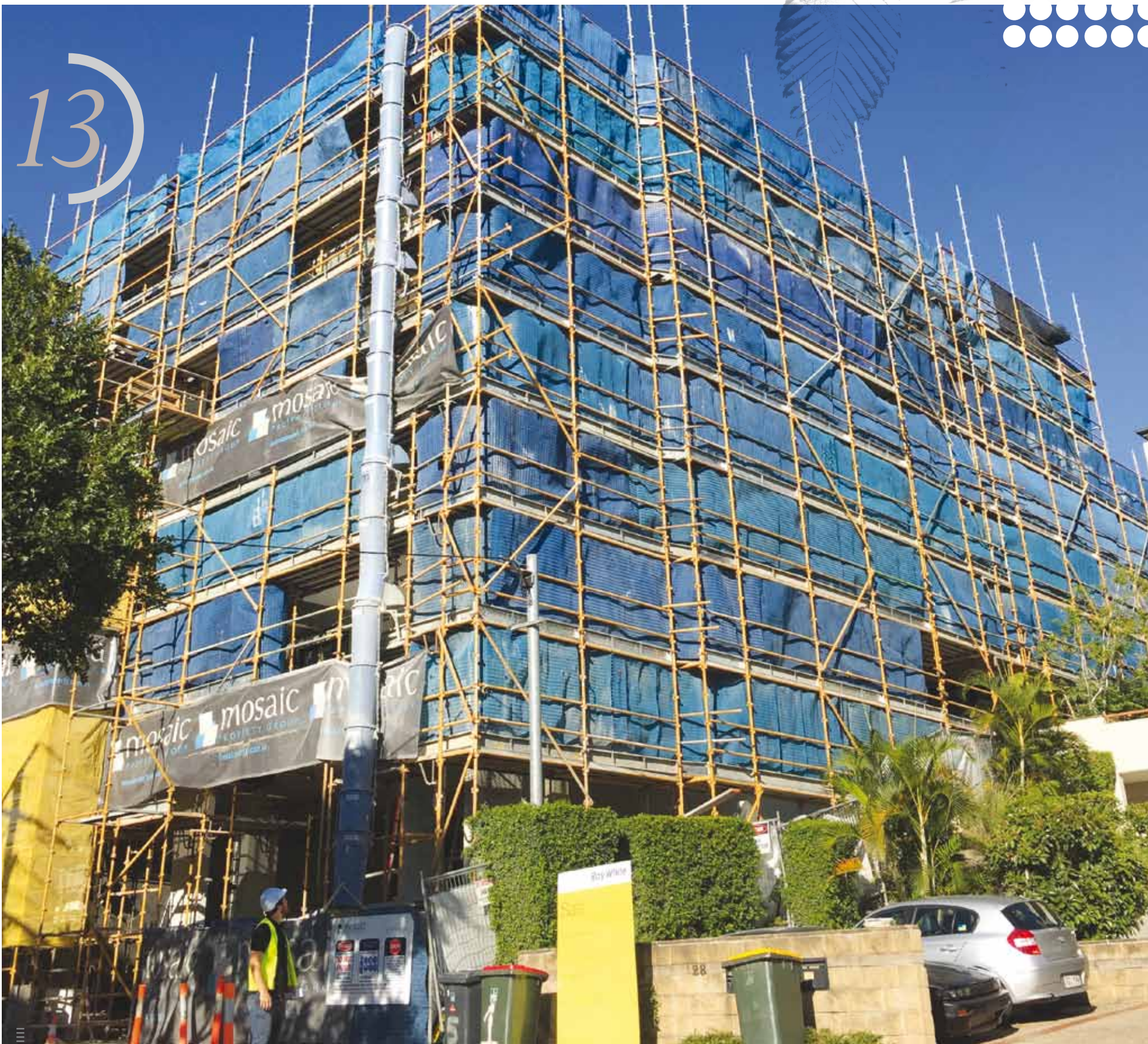


12

CONSTRUCTION UPDATE / JANUARY 2017 /

Good progress was made at Reside in the lead up to the Christmas break, with the benchtops and the first of the timber flooring installed on Level 1.





CONSTRUCTION UPDATE / FEBRUARY 2017 /

Carpentry works on Levels 1 and 2 continued, while benchtops were installed and the electrical and plumbing fit-offs commenced. On Level 3, waterproofing, tiling, flooring, joinery installation and benchtops were completed, while the carpentry and services fit-off is underway.

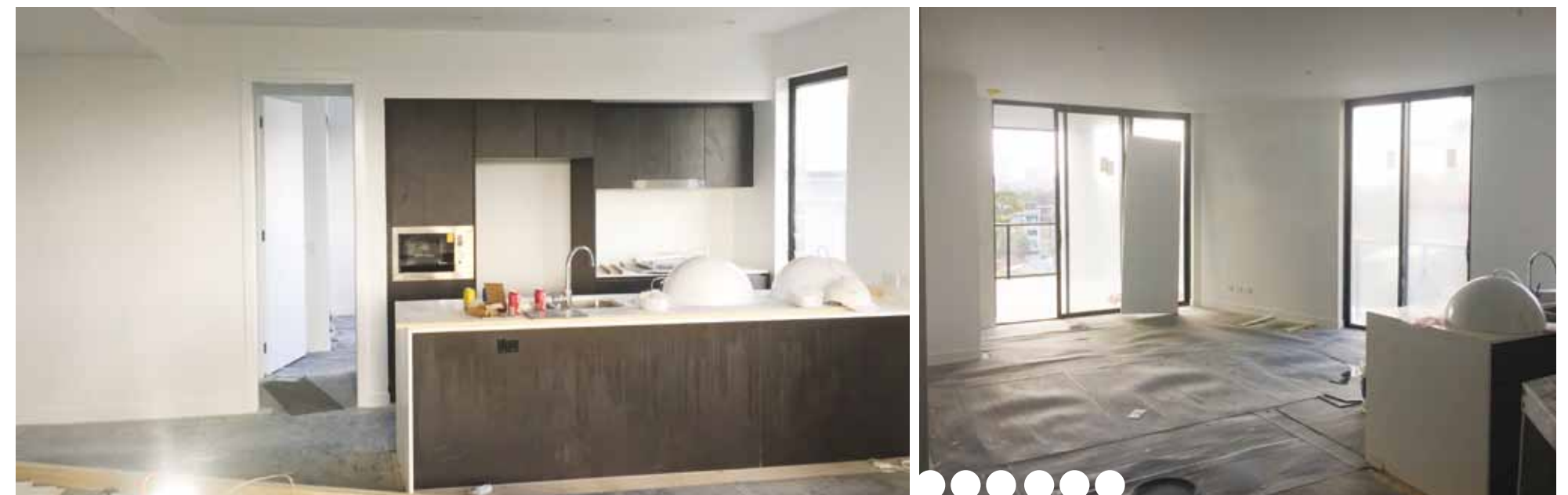


14



CONSTRUCTION UPDATE / MARCH 2017 /

With the last of the external rendering and painting finished as well as the balustrade glazing and privacy screening to balconies, the scaffolding was removed revealing the distinctive architectural façade of the iconic building.



*'RESIDE BY MOSAIC IS A STUNNING ARCHITECTURALLY
DESIGNED BUILDING THAT DELIVERS ON ALL
FRONTS AS A MODERN LIVING SPACE'*



*BREATH TAKING
VIEWS*

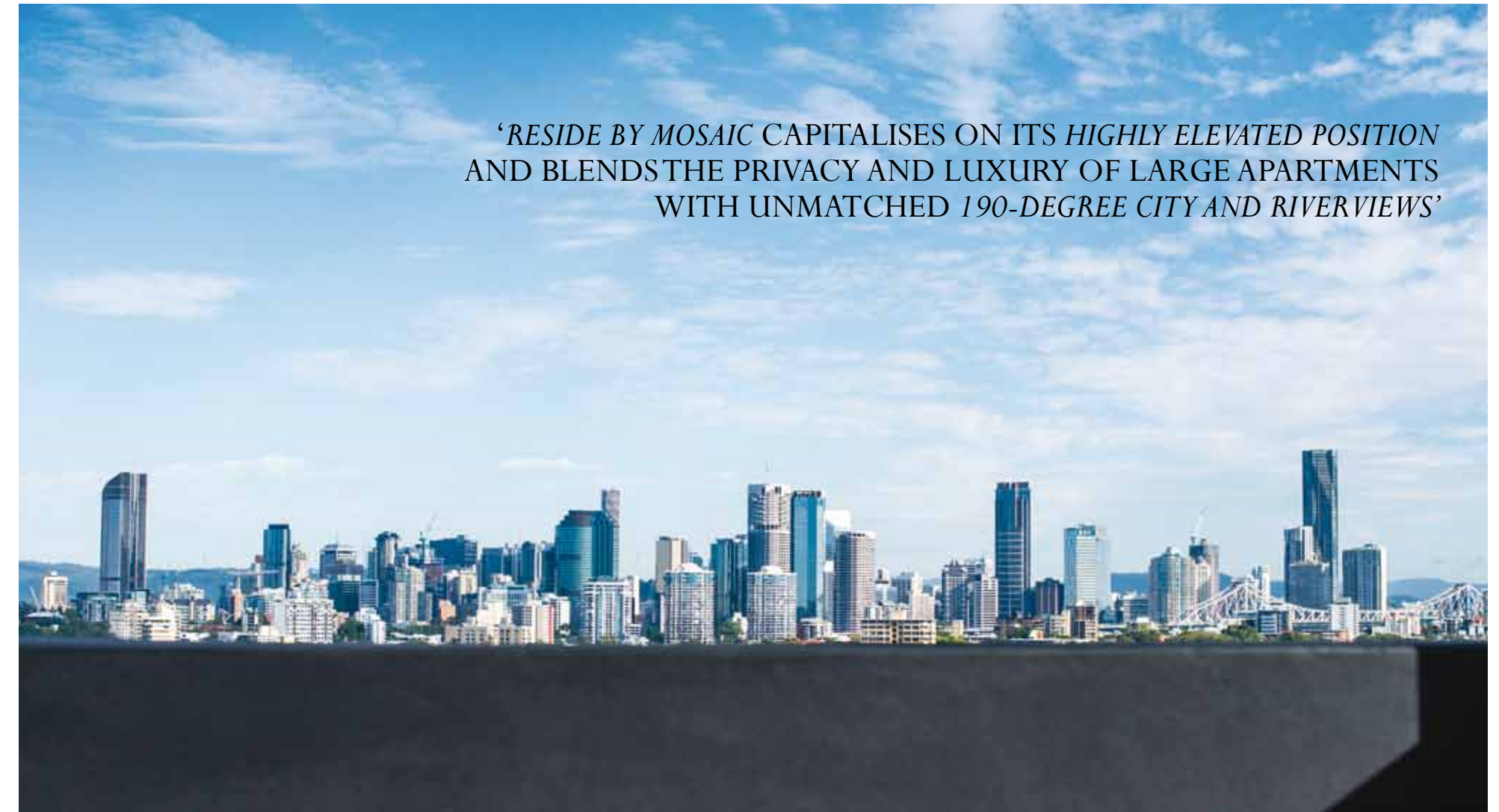




'APARTMENTS ARE FINISHED TO THE HIGHEST POSSIBLE STANDARD RESULTING IN THE HIGHEST QUALITY, BEST DESIGNED AND MOST BEAUTIFULLY FINISHED APARTMENTS IN THEIR PRICE RANGE WITHIN BRISBANE'



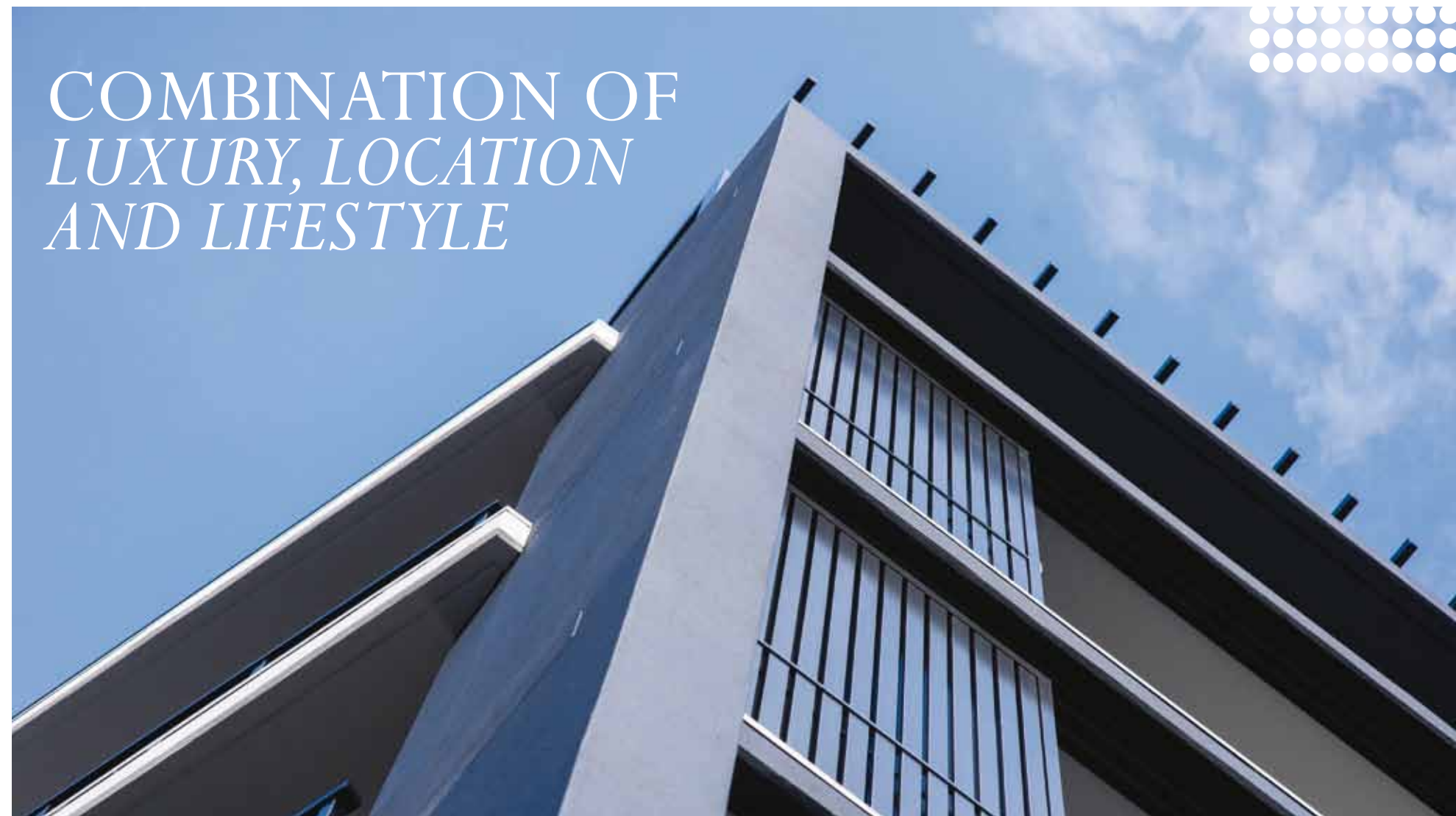
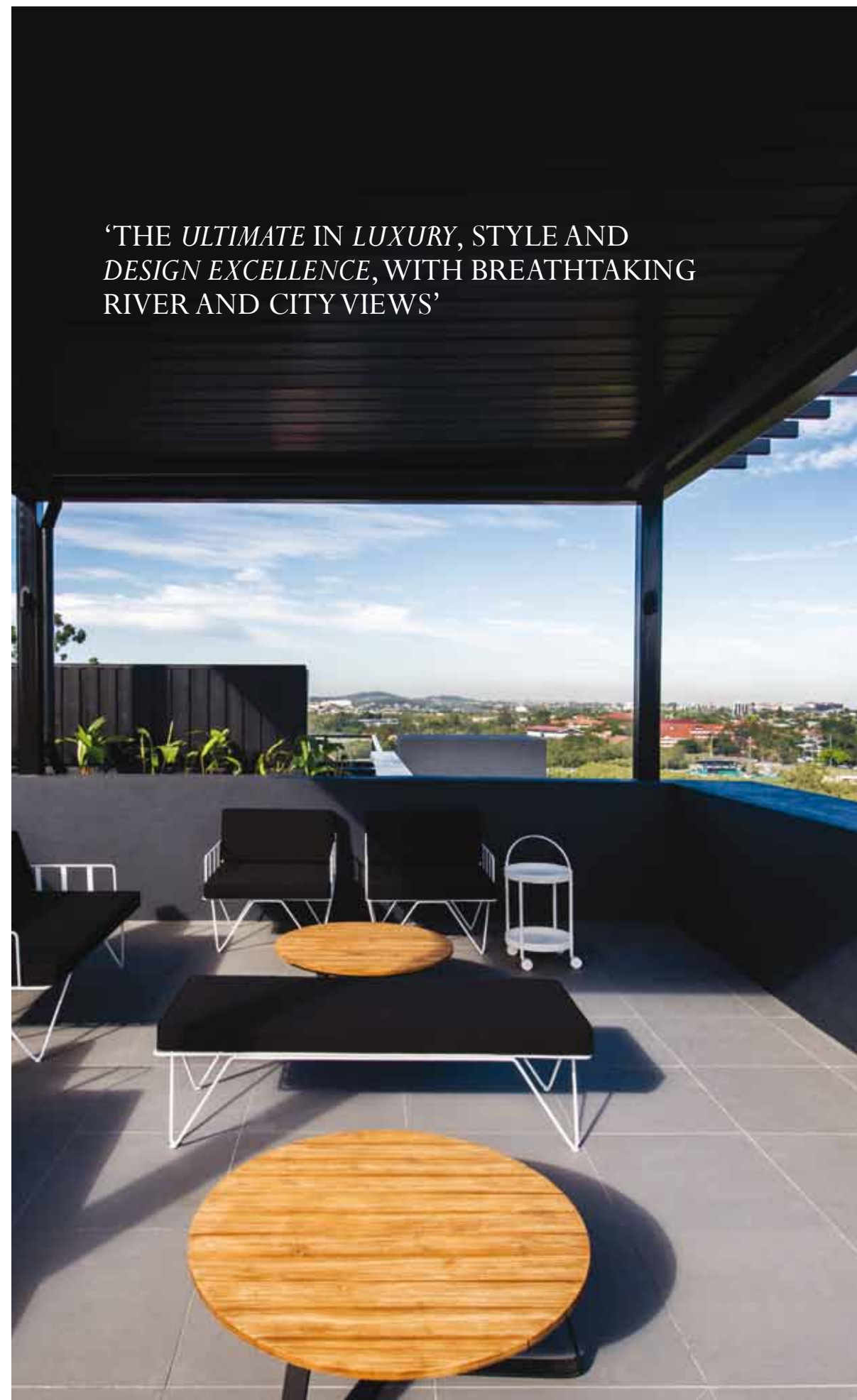
*UNPARALLELED
CITY VIEWS*



'RESIDE BY MOSAIC CAPITALISES ON ITS HIGHLY ELEVATED POSITION AND BLENDS THE PRIVACY AND LUXURY OF LARGE APARTMENTS WITH UNMATCHED 190-DEGREE CITY AND RIVER VIEWS'



'THE *ULTIMATE* IN *LUXURY*, *STYLE* AND *DESIGN EXCELLENCE*, WITH *BREATHTAKING RIVER AND CITY VIEWS*'



COMBINATION OF
LUXURY, *LOCATION*
AND *LIFESTYLE*



*MODERN
FUNCTIONALITY*

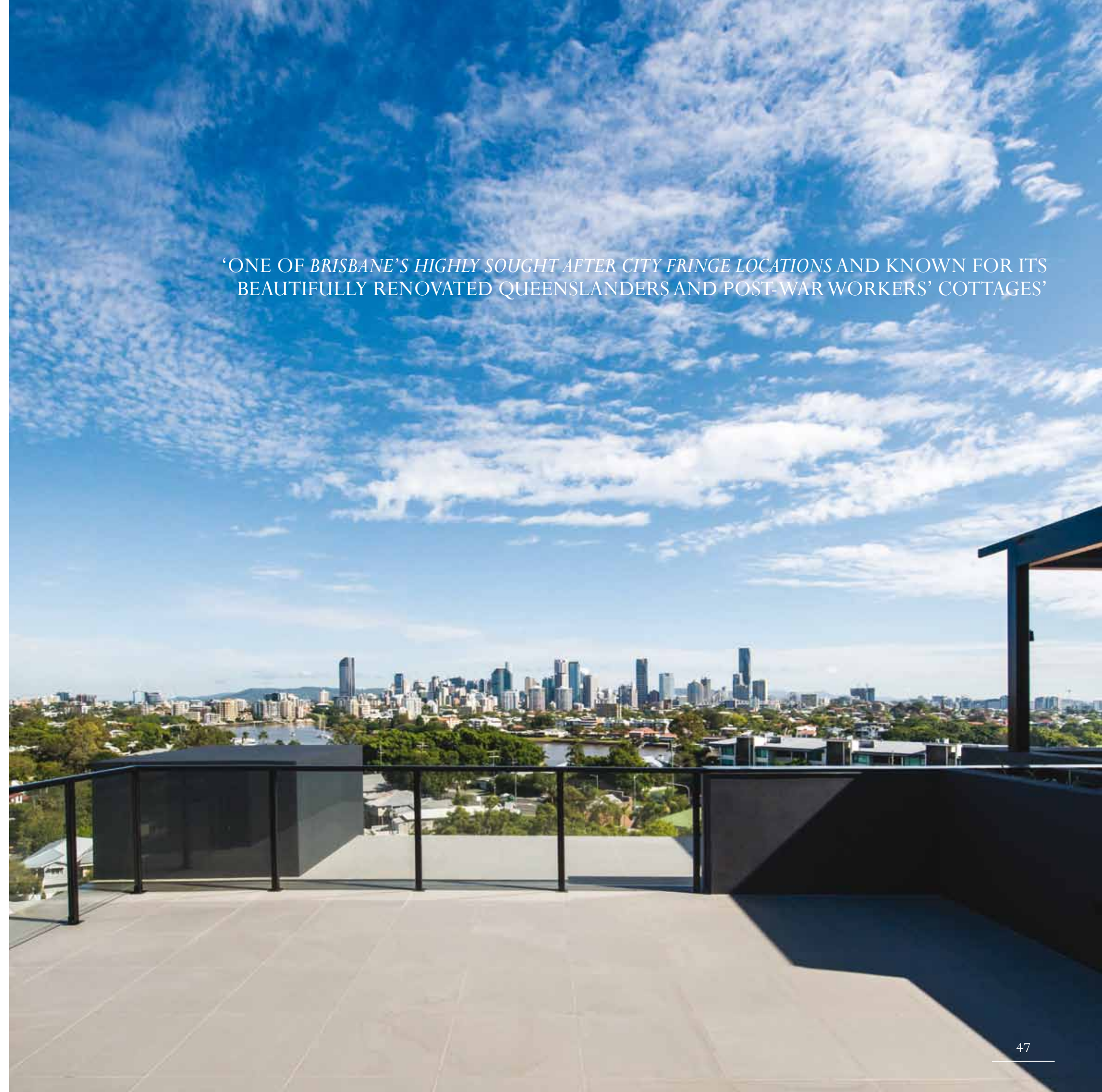


'THE CLASSIC NEUTRAL STYLING AND LUXURY FINISHES AND FIXTURES ARE ENHANCED BY THE GENEROUS INTERIORS AND HIGH CEILINGS'

PERCHED HIGH
ON NORMAN
CRESCENT

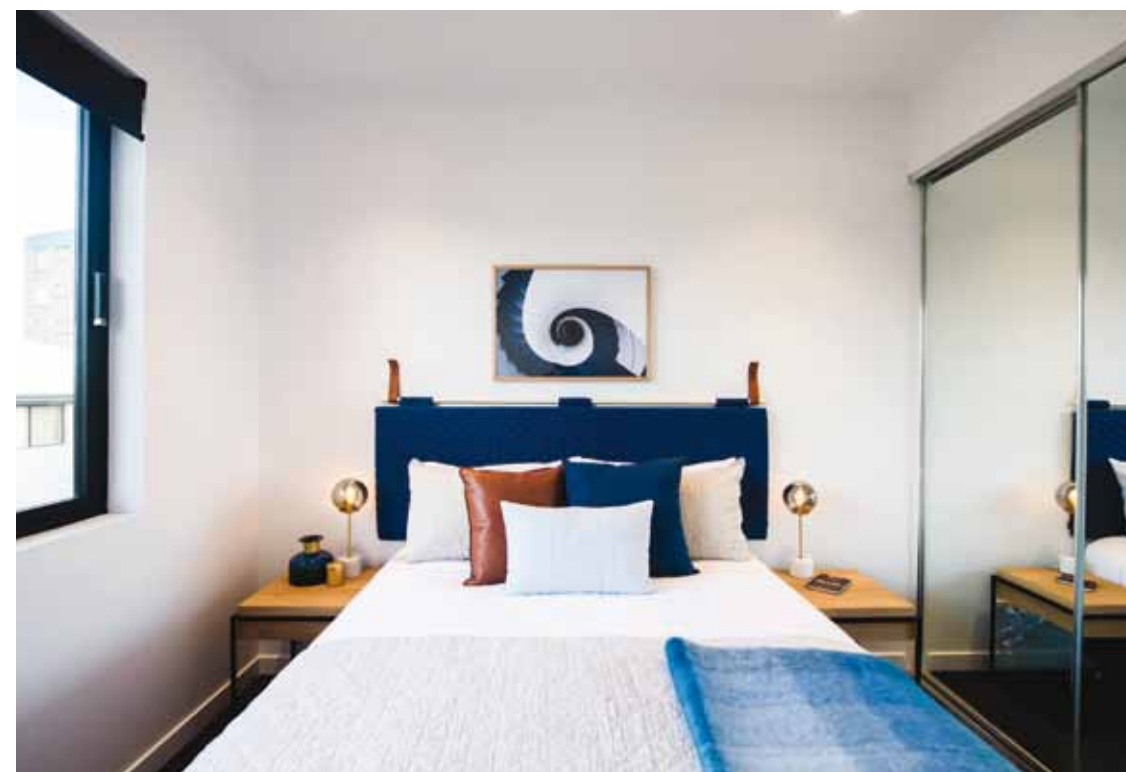


'ONE OF BRISBANE'S HIGHLY SOUGHT AFTER CITY FRINGE LOCATIONS AND KNOWN FOR ITS BEAUTIFULLY RENOVATED QUEENSLANDERS AND POST-WAR WORKERS' COTTAGES'





*EXCEPTIONAL
LEVEL OF QUALITY
THROUGHOUT*



AMPLE
SPACE FOR
ENTERTAINING

'BEAUTIFUL OAK TIMBER FLOORS FLOW OUT TO PRIVATE BALCONIES, COMPLEMENTED BY CONTEMPORARY FINISHES AND QUALITY APPLIANCES MAKING MODERN LIVING A BREEZE'



BRINGING A
NEW STANDARD OF
PRODUCT AND DESIGN



'SUPERIOR PLANNING AND INNOVATIVE DESIGN HAVE LED TO THE CREATION OF SPACIOUS APARTMENTS WITH A LEVEL OF FINISH NOT NORMALLY ASSOCIATED WITH APARTMENTS IN THIS PRICE RANGE'



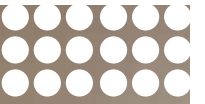
*RESIDE APARTMENTS
ARE UP TO 20 PER CENT
LARGER THAN AVERAGE
FOR THE AREA*



*'THE BUILDING FORM IS SCULPTED SO THAT CITY VIEWS
CAN BE ACHIEVED FROM MOST APARTMENTS'*



'THE BUILDING TAKES FULL ADVANTAGE OF THE CITY VIEWS AND DISTANT MOUNTAIN RANGES'



*NOTHING IS FAR FROM
NORMAN PARK – IT'S ALL
ON YOUR DOORSTEP*

PROUDLY DEVELOPED BY



[p 1300 336 989](tel:1300336989) or [07 3171 2270](tel:0731712270) [f 07 3171 2217](tel:0731712217) [e info@mosaicproperty.com.au](mailto:info@mosaicproperty.com.au)
[address](#) 84 Latrobe Terrace, Paddington Q 4064
[postal](#) PO Box 526, Paddington Q 4064
[w mosaicproperty.com.au](http://mosaicproperty.com.au)

