

CYAN
BY MOSAIC



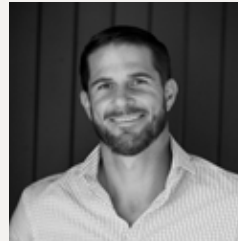
21 CANBERRA TERRACE / KINGS BEACH / CALOUNDRA

DEVELOPED BY...





A THANK YOU MESSAGE FROM *OUR FOUNDER AND MANAGING DIRECTOR*



'I would like to personally congratulate you ...

Congratulations on the settlement of your beautiful new apartment. Although the building is now complete, our commitment to you is far from over.

The completion of a Mosaic project is always an exciting time for everyone and you are now the proud owner of a quality apartment in a stunning building. Every member of the Mosaic team has worked hard to have some involvement and impact on the project, eagerly monitoring the project's evolution. But now it's time for us to hand over the ownership of a building that we have loved since it was merely a set of concept plans and a vacant block of land.

For us, the commitment to our clients certainly doesn't stop at settlement. We will continue to closely monitor and track the building and landscaping over the next 12 months to ensure everything is settling as it should, as well as rectifying any unforeseen issues, if required. As Mosaic maintains the management rights for all its developments, we will be there for the life of the building, ensuring it is well maintained and kept in the best possible condition, protecting your investment for many years to come.

And of course, should you have questions about anything at all, be it now, or in 1, 2 or 5 years' time, we are always here to assist.

Thanks again for your support of Mosaic.'

A handwritten signature in blue ink that reads "Book". The signature is written in a cursive, slightly stylized font.

EVOLUTION OF CYAN





VOL ONE

APRIL 2017



Once building approvals were in place, Mosaic Construction wasted no time, completing the piling around the perimeter of the site - no small feat considering the tough ground conditions - while formwork and reinforcement works for the capping beam commenced.



VOL TWO

MAY 2017



Even though the difficult conditions required a 35-tonne excavator equipped with a rock breaker on site, the soldier piles around the perimeter of the basement carpark were completed as well as the capping beam which distributes the loads from the building above down into the soldier piles.



VOL THREE

JUNE 2017



With the bulk excavation complete, two 12-tonne stormwater detention tanks were installed, which required a 130-tonne crane to lift a 35-tonne crane and a 25-tonne crane into the excavated site – a very difficult manoeuvre.



VOL FOUR

JULY 2017



A major milestone was reached with the pouring of the first slab, the 'Basement Level 2' slab-on-ground, which will now provide a solid area of hardstand to work off as the building begins to move upwards out of the ground.



VOL FIVE

AUGUST 2017



With the first of the eight suspended slabs (Basement Level 1) successfully poured, structural works continued on Basement Level 1 with the blockwork walls, service penetrations and fire door frames all completed.



VOL SIX

SEPTEMBER 2017



Two major milestones were reached, beginning with the pouring of the podium slab, a much more complicated pour than the typical slabs above, and the erection of the tower crane which will significantly assist the workers on site and improve the speed of construction.



VOL SEVEN

OCTOBER 2017



The building moved steadily upwards to Level 3, with formwork, steel reinforcement and service rough-ins followed by the pouring of the suspended slab.

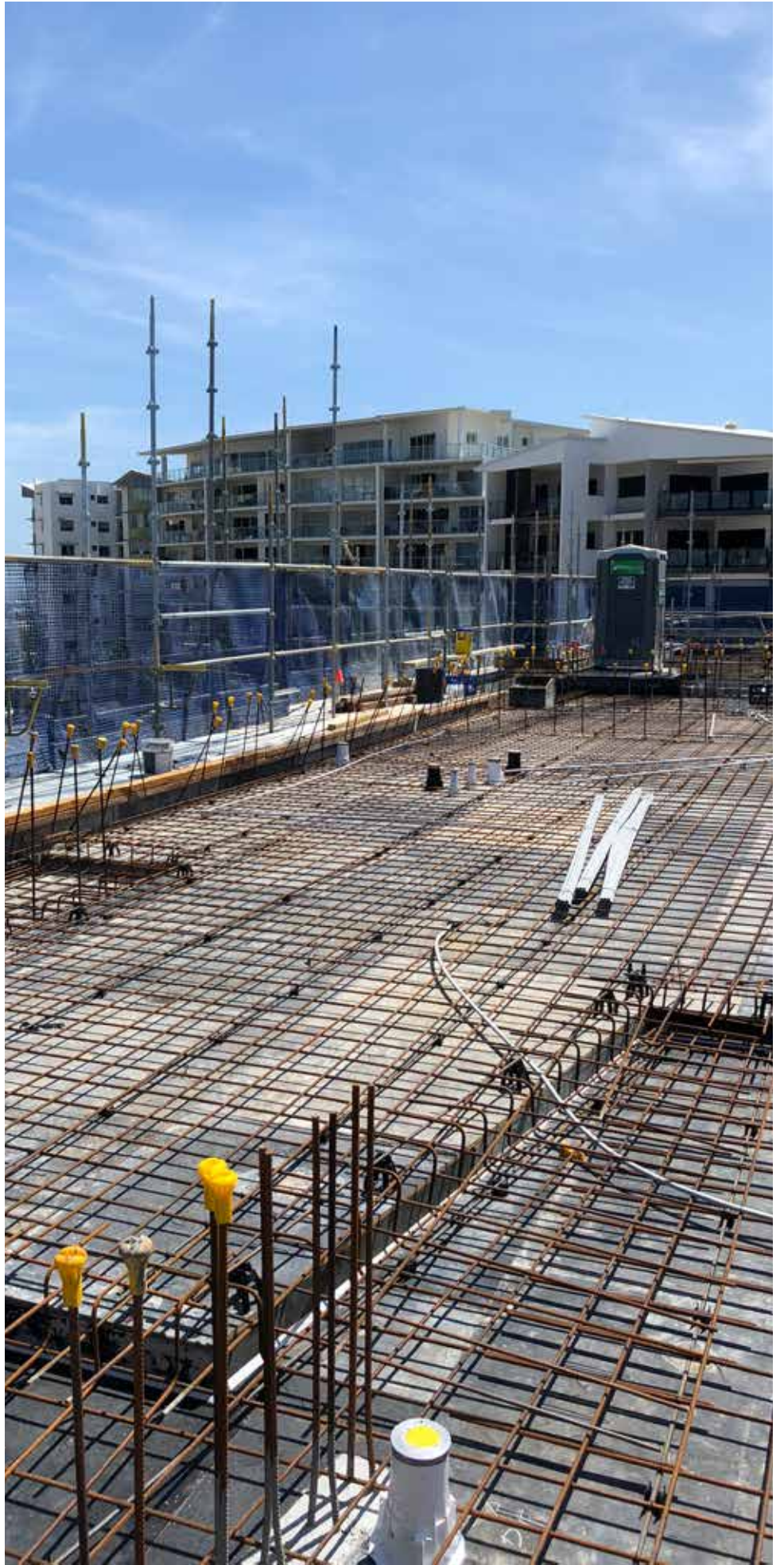


VOL EIGHT

NOVEMBER 2017



As structural works moved up to Level 4, room layouts began to take shape on Level 1 as work commenced on the framing of internal apartment walls.

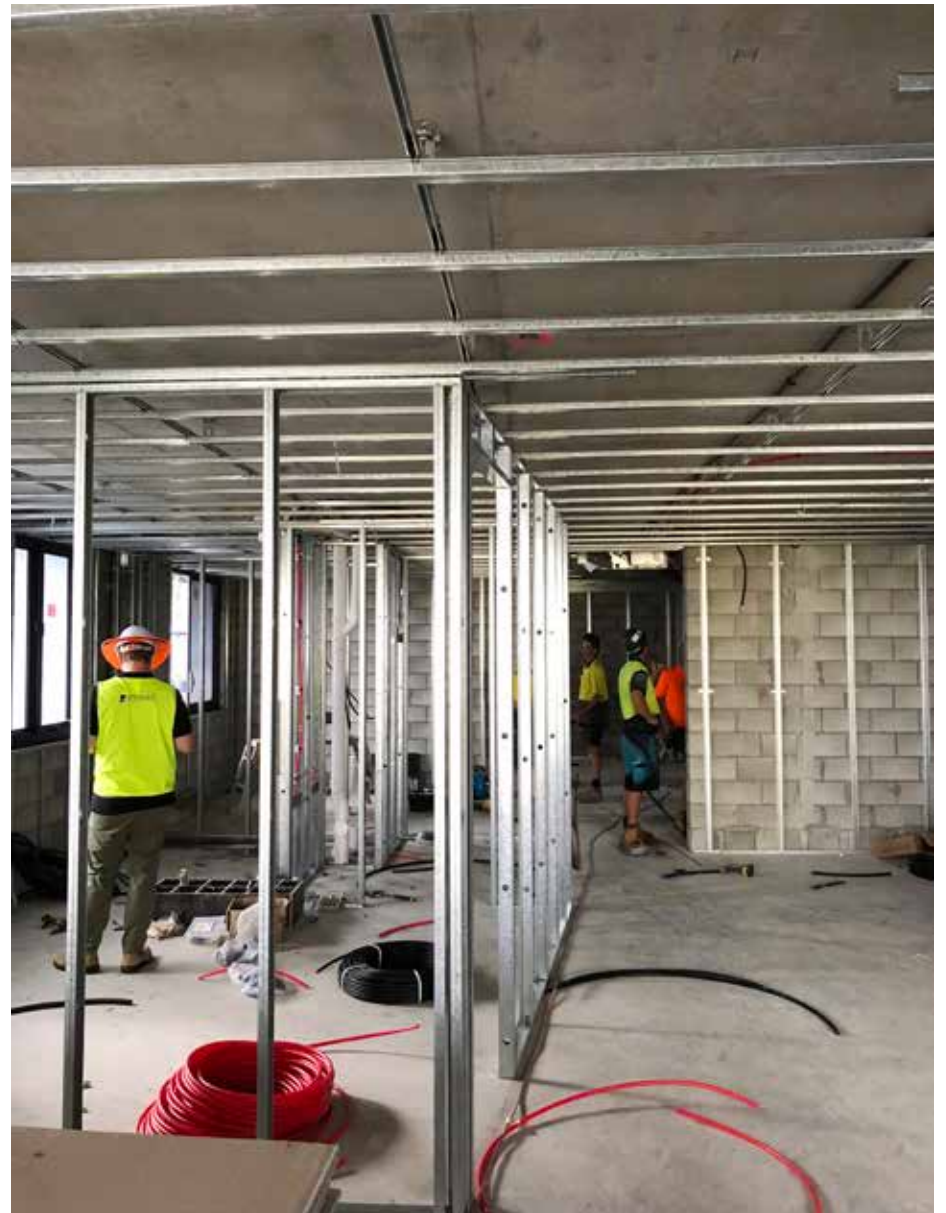


VOL NINE

DECEMBER 2017



While formwork was being erected for the sixth and final slab, internal works continued with framing reaching Level 3 and glazing installed on the lower levels, including the sliding glass doors to the balconies.



VOL TEN

FEBRUARY 2018



The building reached its full height with the pouring of the final slab. As roof framing on the final level neared completion and blockwork progressed on the Penthouse Level, the glazing, framing and sheeting of apartments reached Level 6.



VOL ELEVEN

MARCH 2018



With the addition of the penthouse roof, Cyan's external structure was completed. The installation of kitchen and bathroom joinery commenced on the lower levels, while tiling of wet areas and balconies was well underway.

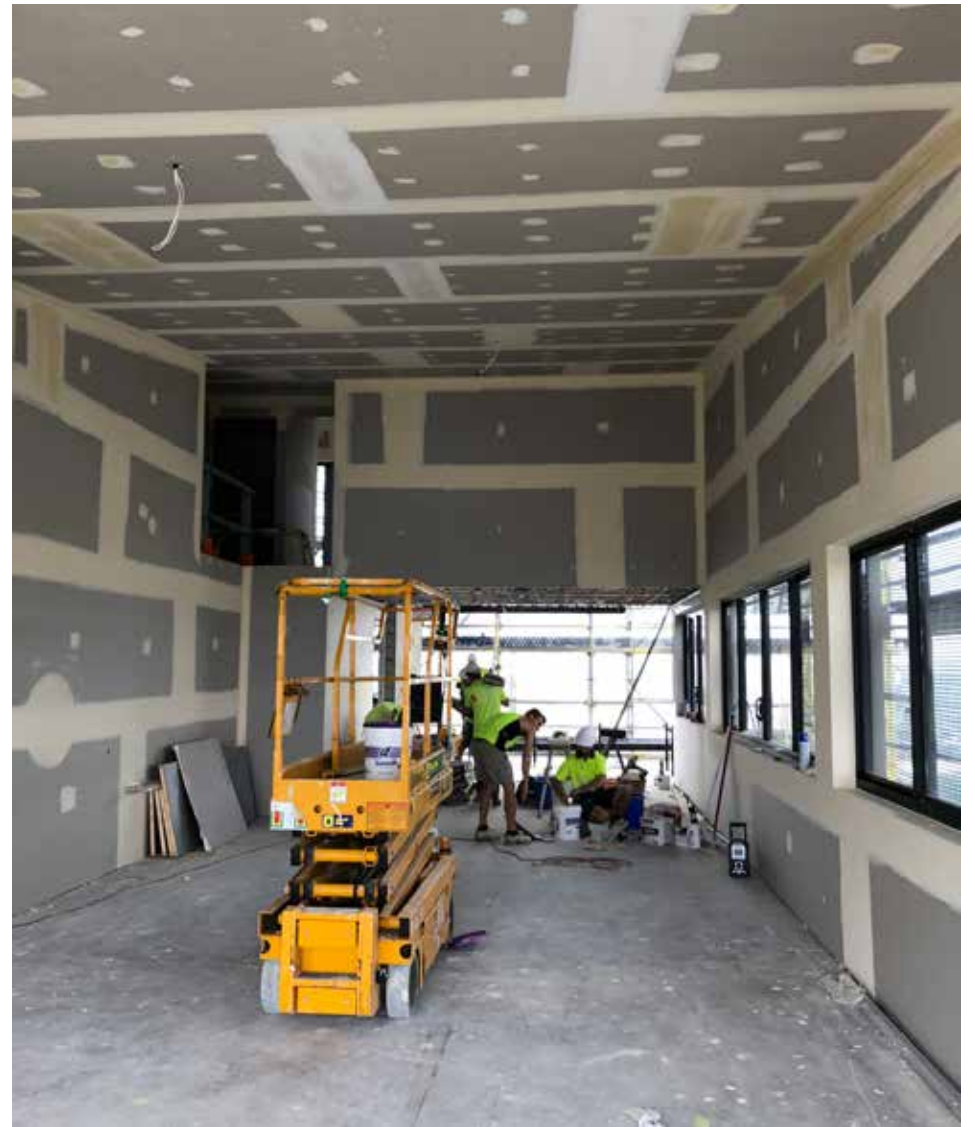


VOL TWELVE

APRIL 2018



As the project neared completion, the final trades moved into action. All apartments were sheeted and most of the kitchens and joinery fitted off while external painting and rendering was well underway.



CONTEMPORARY DESIGN FUSED WITH ENVIRONMENTAL SUSTAINABILITY





INNOVATIVE DESIGN AND CLEVER PLANNING MAXIMISES PRIVACY AND SPACE









LUXURY MATERIALS AND PRESTIGIOUS INCLUSIONS





31 BEAUTIFULLY APPOINTED APARTMENTS OVER SEVEN
LEVELS, CROWNED BY TWO EXCLUSIVE PENTHOUSES







PERFECTLY POSITIONED OVERLOOKING KINGS BEACH AT THE SOUTHERN END OF THE SUNSHINE COAST





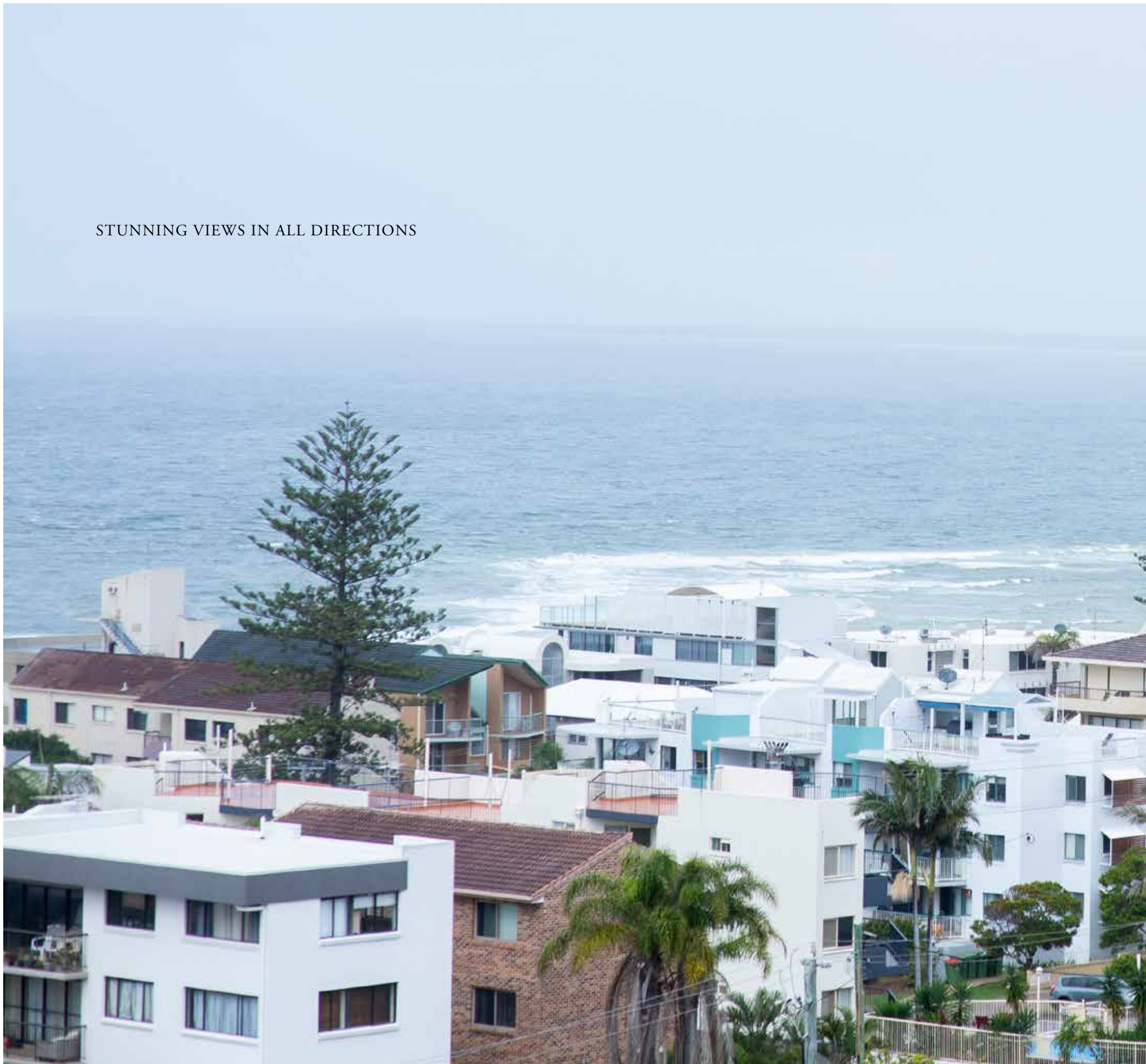




GOURMET KITCHENS WITH STONE BENCHTOPS, DESIGNER TAPWARE AND EUROPEAN APPLIANCES

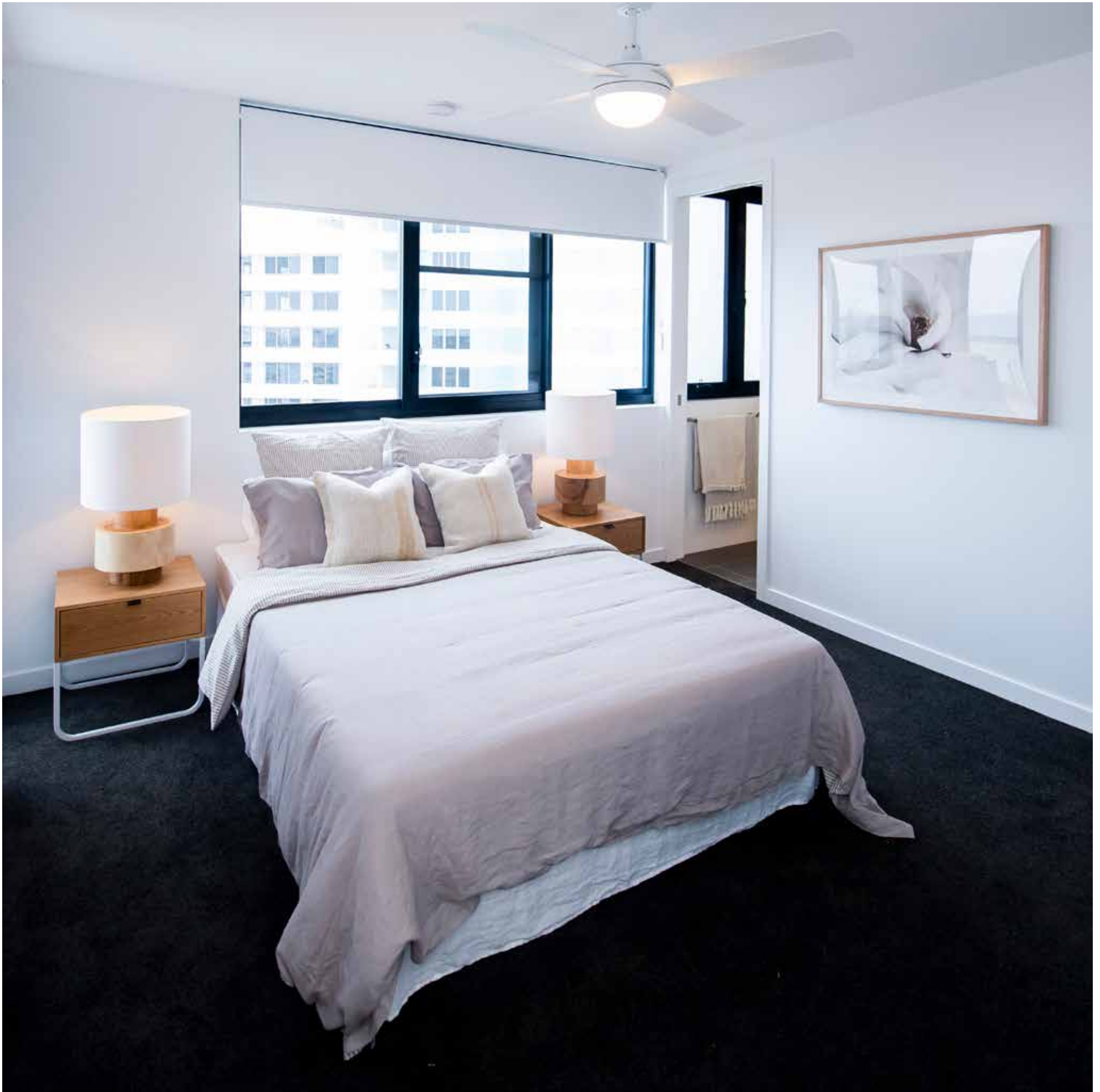


STUNNING VIEWS IN ALL DIRECTIONS







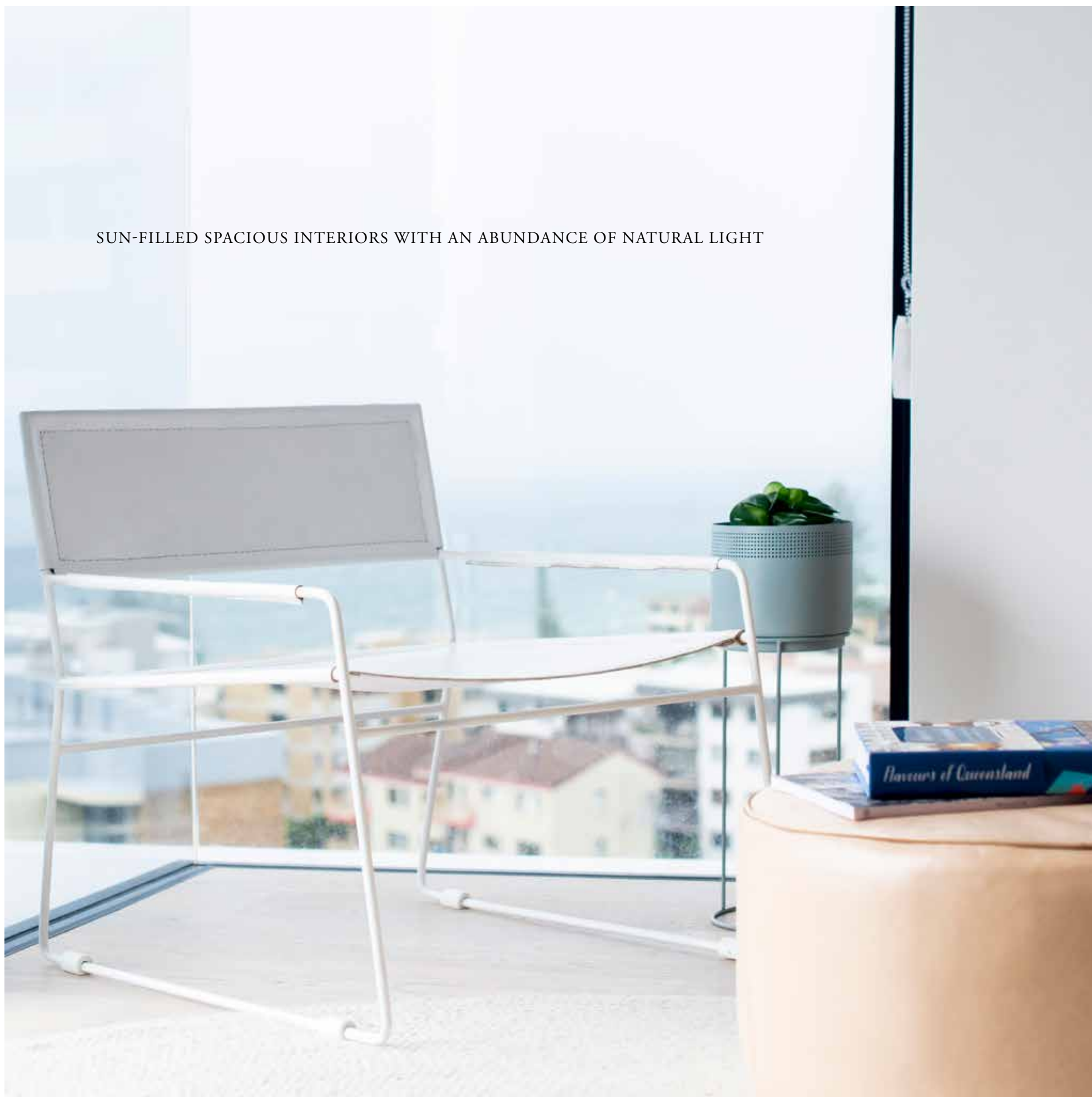






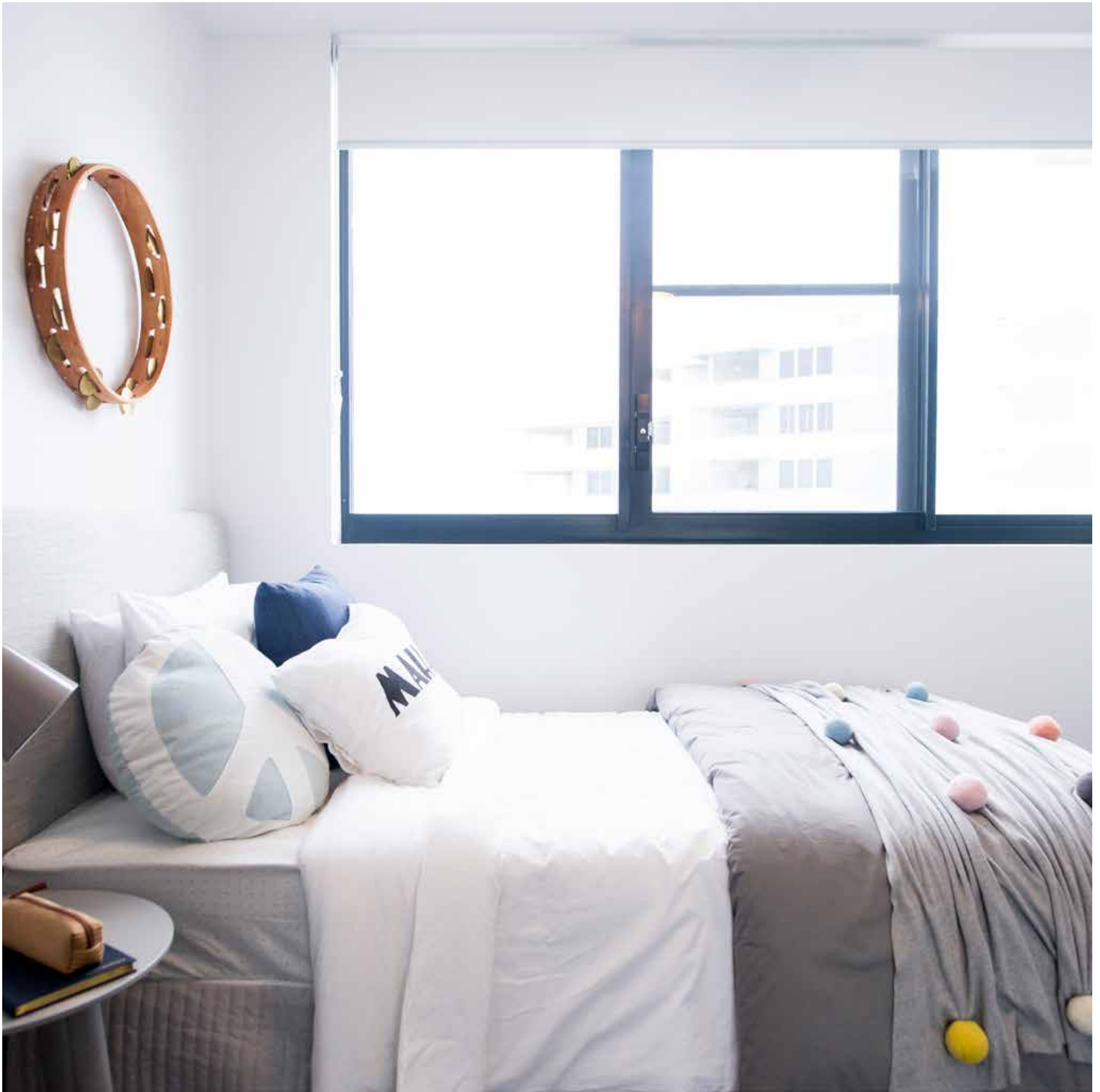


SUN-FILLED SPACIOUS INTERIORS WITH AN ABUNDANCE OF NATURAL LIGHT











LUXURIOUS BATHROOMS COMBINE FORM AND FUNCTIONALITY







MULTIPLE MATERIALS, COLOURS AND EXTRUSIONS PROVIDE VISUAL CONTRAST

CYAN

BY MOSAIC

21

PROUDLY DEVELOPED AND CONSTRUCTED BY...



p 1300 336 989 or 07 3171 2270 **f** 07 3171 2217 **e** info@mosaicproperty.com.au

address 84 Latrobe Terrace, Paddington Q 4064

postal PO Box 526, Paddington Q 4064

w mosaicproperty.com.au

