



*ARC*  
*by mosaic*



12  
LIMA  
STREET  
AUCHENFLOWER





*'a thank you  
message  
FROM OUR  
MANAGING  
DIRECTOR'*



'I WOULD LIKE TO PERSONALLY CONGRATULATE YOU.'

CONGRATULATIONS ON THE SETTLEMENT OF YOUR BEAUTIFUL NEW APARTMENT. ALTHOUGH THE BUILDING IS NOW COMPLETE, OUR COMMITMENT TO YOU IS FAR FROM OVER.

The completion of a Mosaic project is always an exciting time for everyone and you are now the proud owner of a quality apartment in a stunning building. Every member of the Mosaic team has worked hard to have some involvement and impact on the project, eagerly monitoring the project's evolution. But now it's time for us to hand over the ownership of a building that we have loved since it was merely a set of concept plans and a vacant block of land.

For us, the commitment to our clients certainly doesn't stop at settlement. We will continue to closely monitor and track the building and landscaping over the next 12 months to ensure everything is settling as it should, as well as rectifying any unforeseen issues, if required. As we maintain the management rights for all our developments, Mosaic will be there for the life of the building, ensuring it is well maintained and kept in the best possible condition, protecting your investment for many years to come.

And of course, should you have questions about anything at all, be it now, or in 1, 2 or 5 years' time, we are always here to assist.

Thanks again for your support of Mosaic.

*Brook*

# 'the EVOLUTION OF ARC'

[ ARTIST IMPRESSION ]



# 'the EVOLUTION OF ARC' / 1

[VOLUME 1] MARCH 2016



With a scheduled start date on site of 28 March, the Team has been very busy behind the scenes ensuring all necessary approvals are in place.



# 'the EVOLUTION OF ARC' / 2

[ VOLUME 2 ] APRIL 2016



Although detailed geotechnical investigations undertaken on the site had identified some sub-surface rock, once the drilling commenced we found that the rock shelf was larger than originally anticipated, so the drilling took slightly longer than allowed for in the program.



# 'the EVOLUTION OF ARC' / 3

[ VOLUME 3 ] MAY 2016



Excavation for the foundations of the required structural retaining wall and columns of the building are nearing completion, with reo cages installed and concrete poured, leaving the column starter bars exposed.



# 'the EVOLUTION OF ARC' / 4

[ VOLUME 4 ] JUNE 2016



The vertical cut face was excavated back to expose the bored piers, which allowed the retaining wall footings to be excavated before reinforcement was placed and concrete poured.





# 'the EVOLUTION OF ARC' / 5



The core-filled blockwork retaining wall around the perimeter of the site was installed and waterproofed, while structural columns to the underside of Level 1 were formed, reinforced and poured.



# 'the EVOLUTION OF ARC' / 6



With the Level 1 structural columns formed and poured, core-filled blockwork walls were laid and run up to the underside of Level 2.



# 'the EVOLUTION OF ARC' / 7

[ VOLUME 7 ] SEPTEMBER 2016



After the Level 2 slab was poured and reached maximum strength, blockwork walls were run to the underside of Level 3 and structural columns were formed and poured.



# 'the EVOLUTION OF ARC' / 8

[ VOLUME 8 ] OCTOBER 2016



The formwork deck and back-propping system for the Level 4 slab were installed, conduits run and reinforcement mats fixed into position before pouring the concrete.

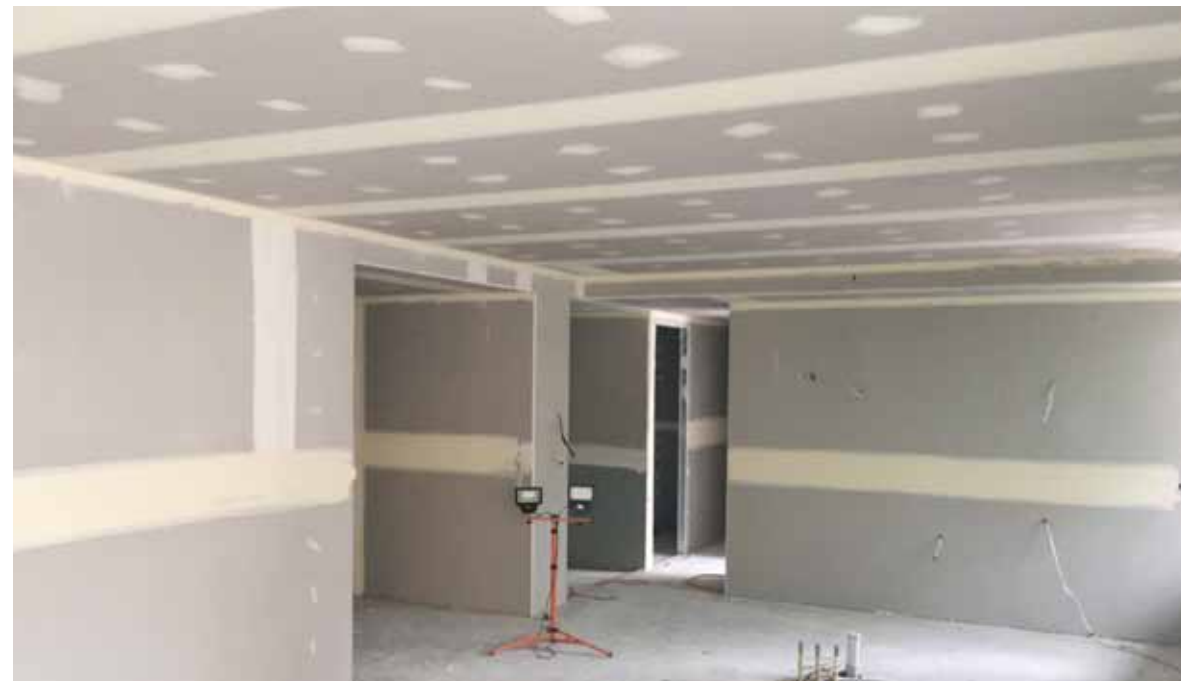


# 'the EVOLUTION OF ARC' / 9

[ VOLUME 9 ] NOVEMBER 2016

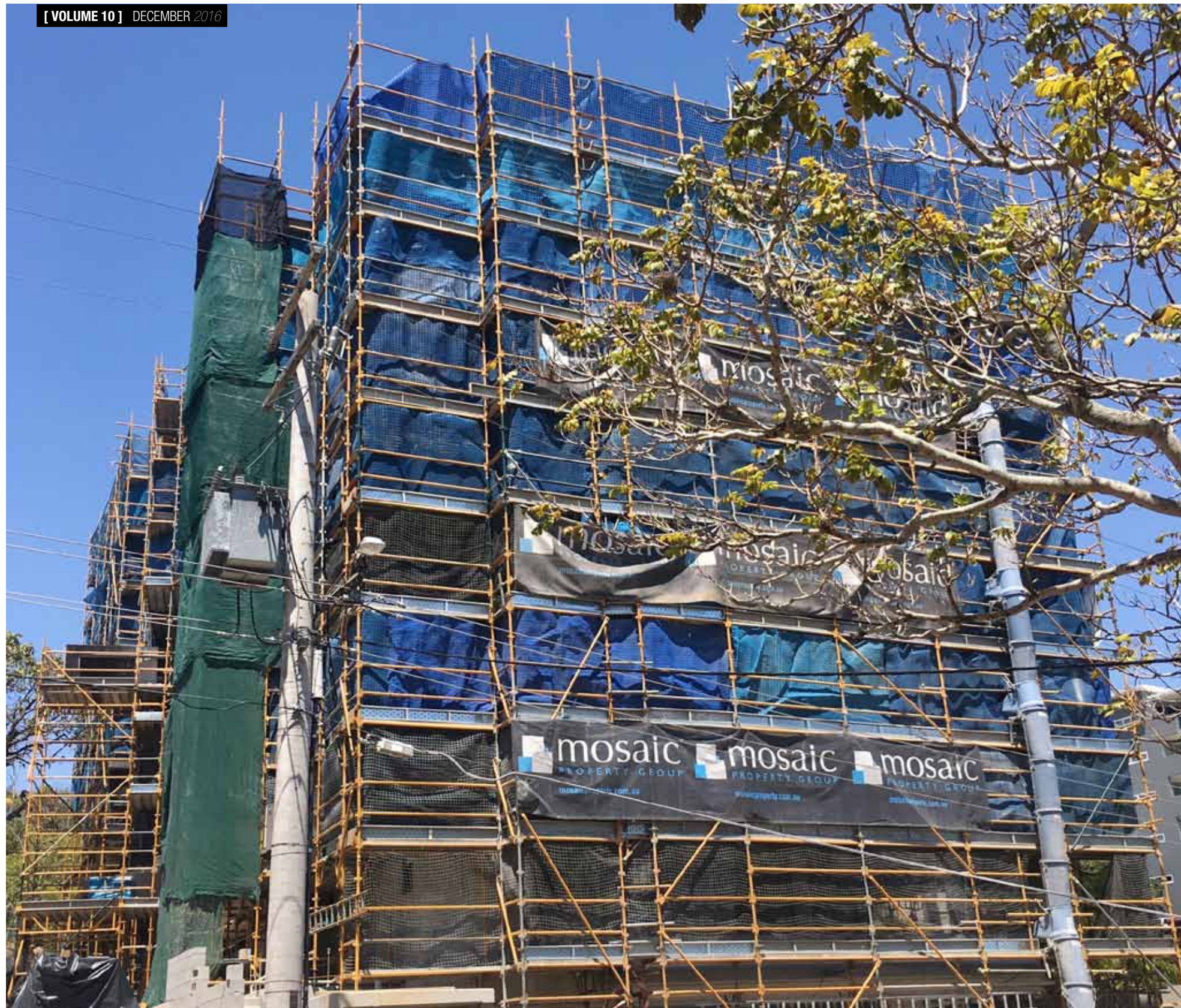


With two slabs poured over the course of the last month, Arc on Lima continues to show strong progress as it steadily moves upwards.



# 'the EVOLUTION OF ARC' / 10

[ VOLUME 10 ] DECEMBER 2016



As the year draws to a close, Arc on Lima continues to take shape with the roof now on and the building at full height.

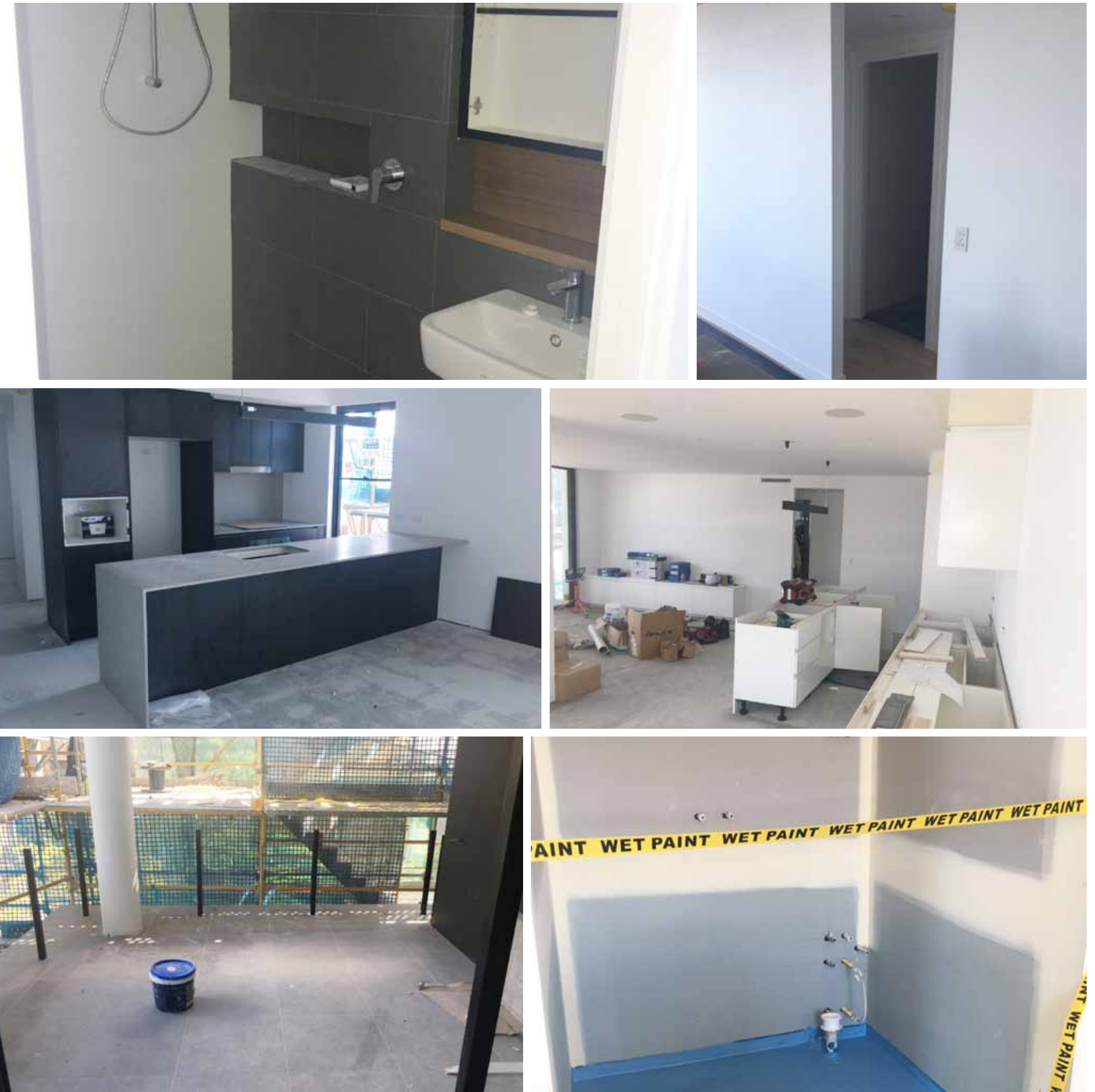


# 'the EVOLUTION OF ARC' / 11

[ VOLUME 11 ] FEBRUARY 2017

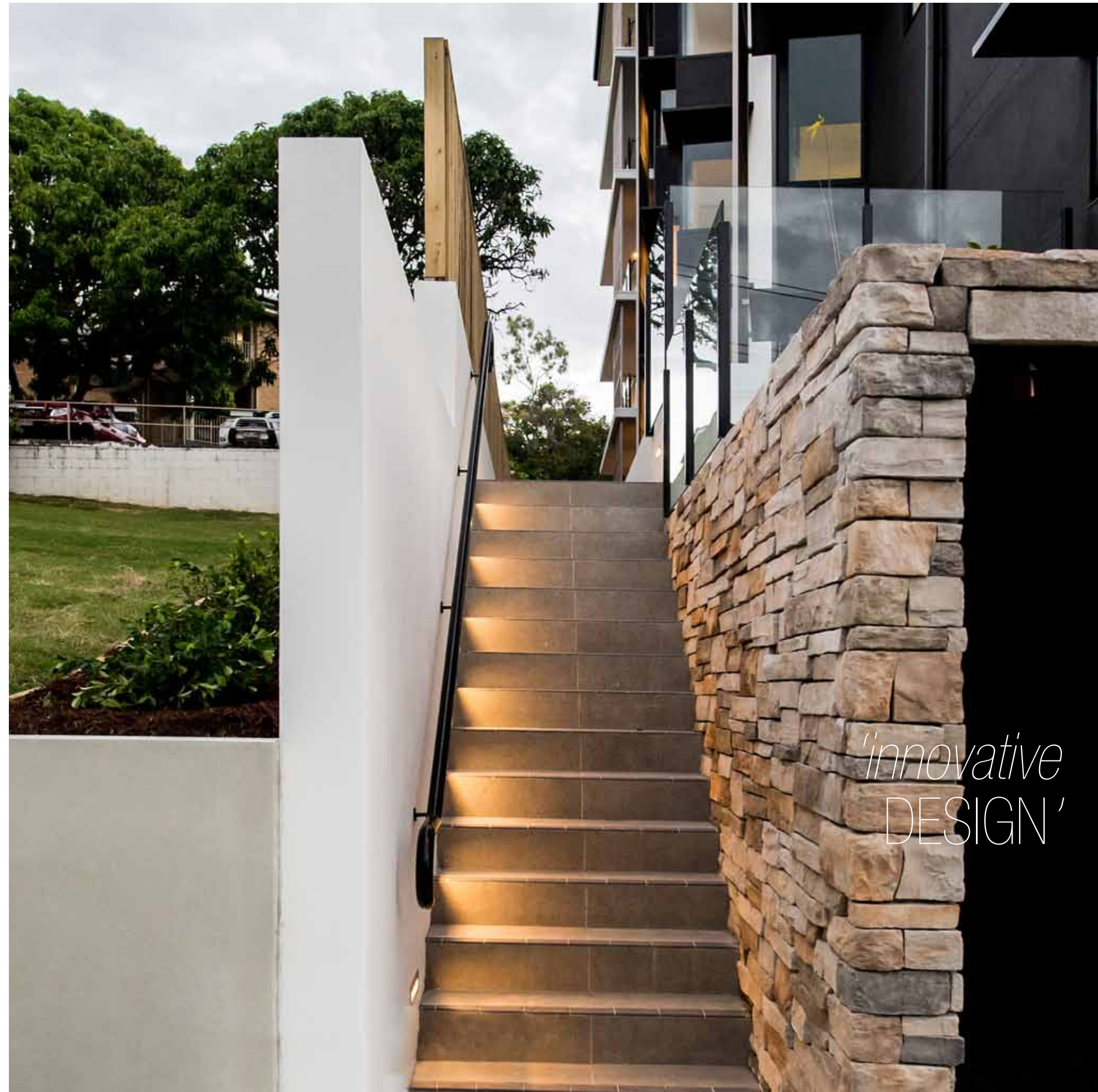


The external facade is becoming further exposed as the scaffolding is stripped from Level 6 down to Level 4. Internally, substantial progress.....





*'Arc is a boutique apartment development located on Lima Street, in the leafy inner-west Brisbane suburb of Auchenflower.'*



*'innovative DESIGN'*





*'Thoughtful and considered design with large, private balconies to take maximum advantage of the stunning views and river breezes.'*



*'outstanding level of LUXURY'*





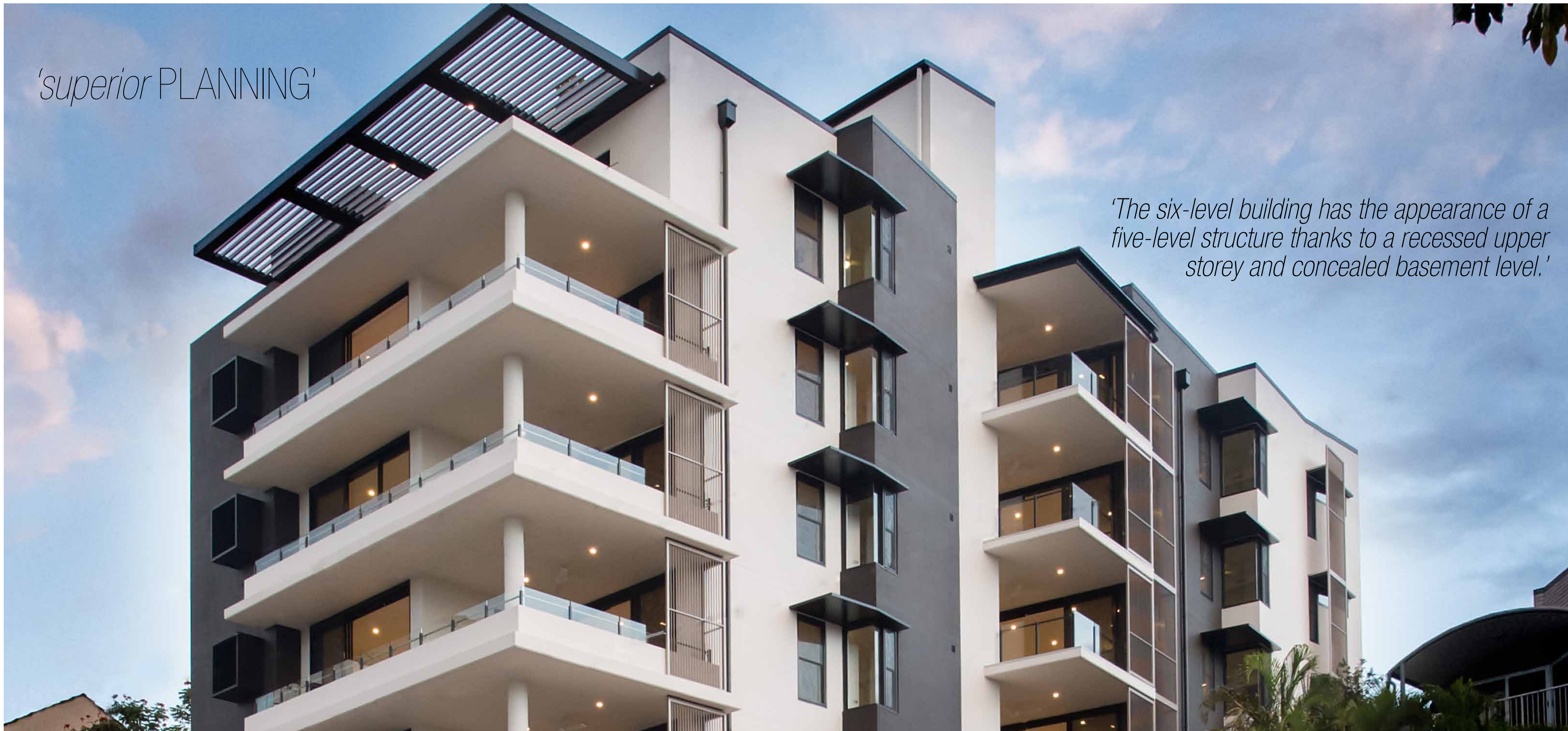
*'All apartments occupy a corner position  
thereby allowing maximum crossflow  
ventilation and solar access.'*

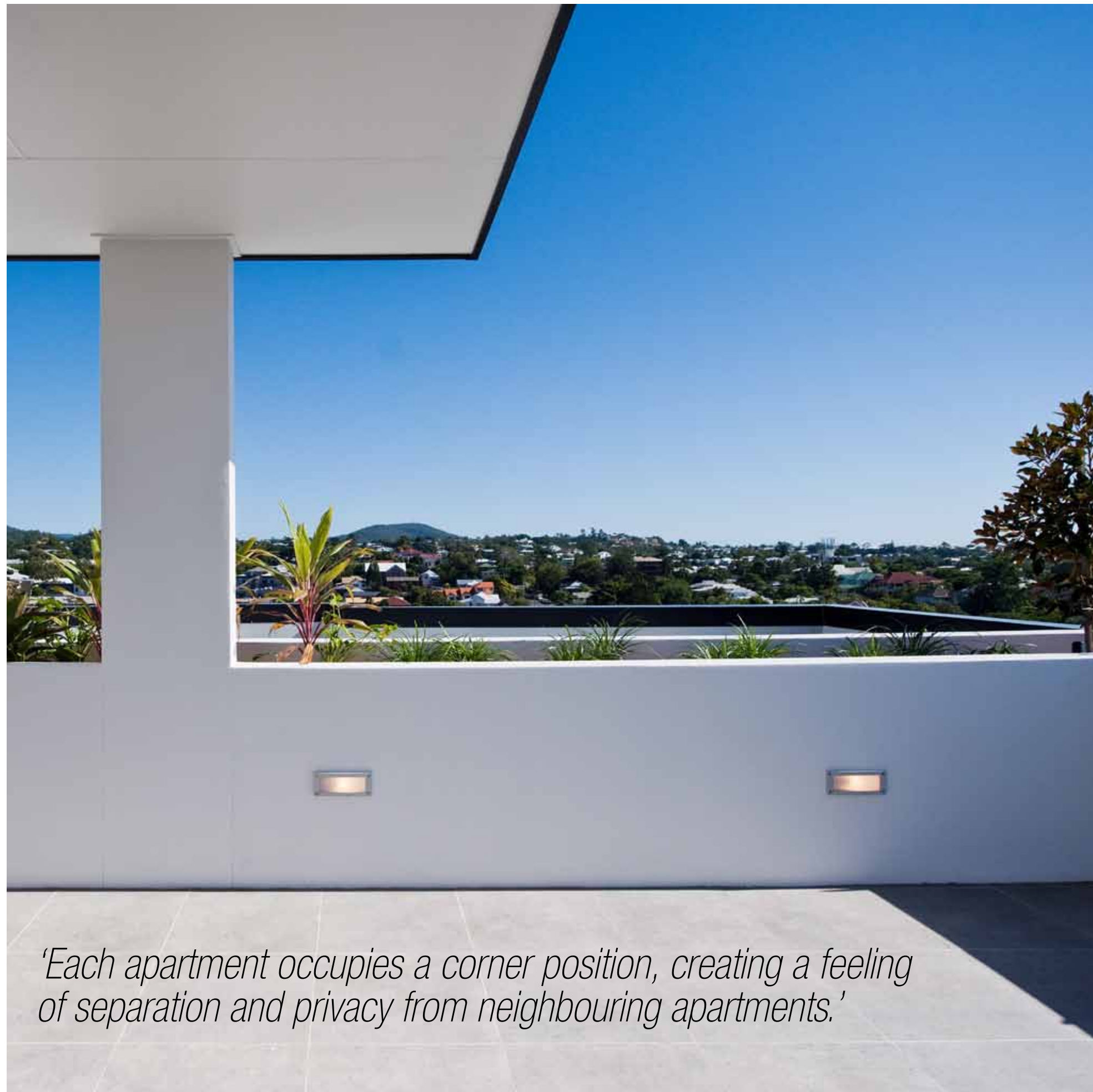


*'luxurious lobbies and  
COMMON SPACES'*

*'superior PLANNING'*

*'The six-level building has the appearance of a five-level structure thanks to a recessed upper storey and concealed basement level.'*





*'Each apartment occupies a corner position, creating a feeling of separation and privacy from neighbouring apartments.'*



*'classic neutral STYLING'*



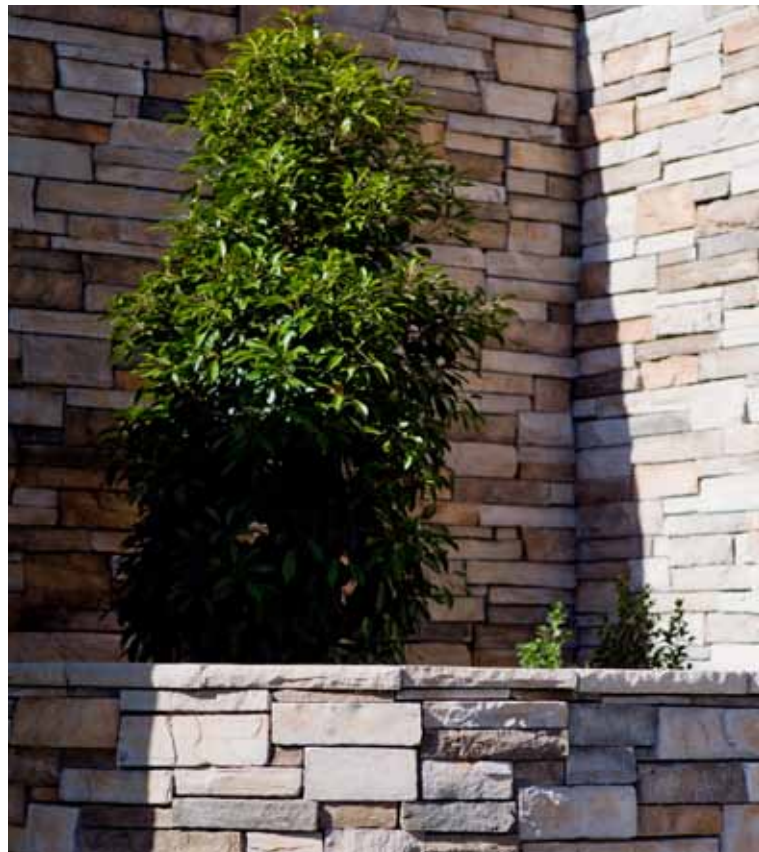
*'space and DESIGN'*



*'Arc's spacious apartments embrace modern functionality with open-plan interiors.'*



*'neutral palate  
TONES'*



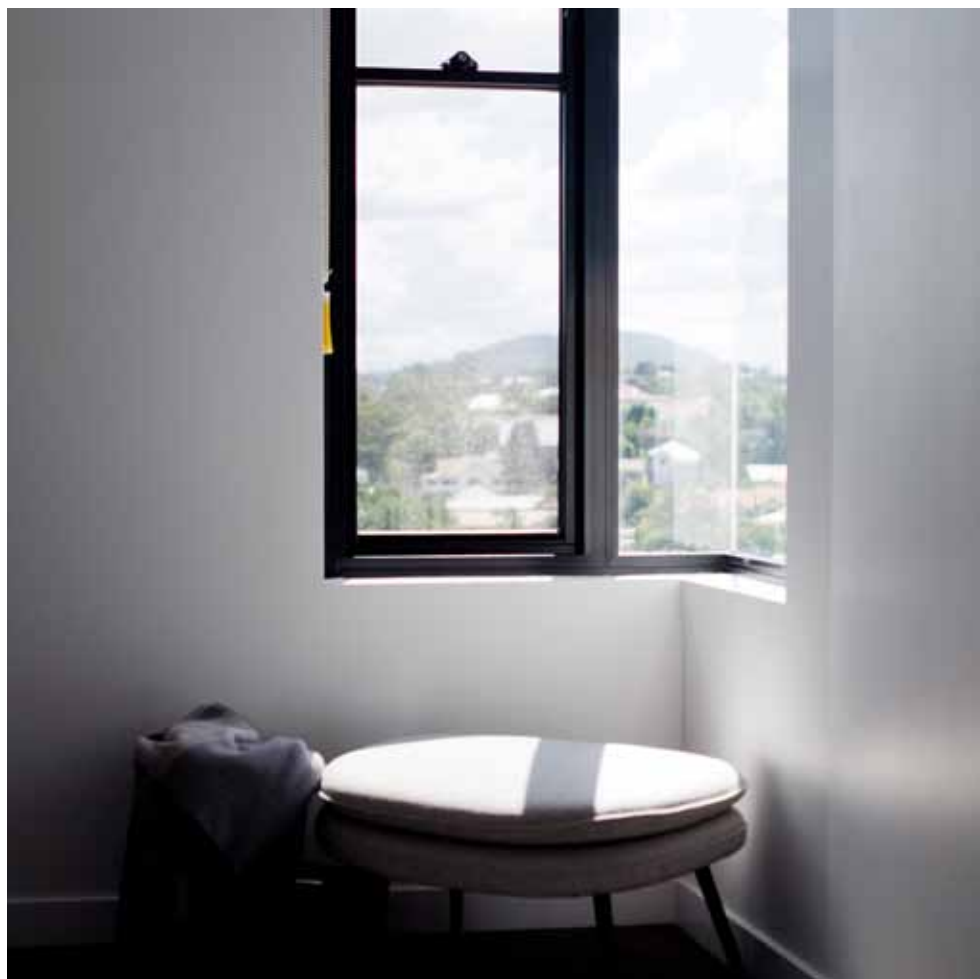
*'The thin low-profile frontage  
complements the existing  
building scale of the area.'*



*'contemporary  
DESIGN'*

*'A boutique collection of stylish, contemporary apartments.'*







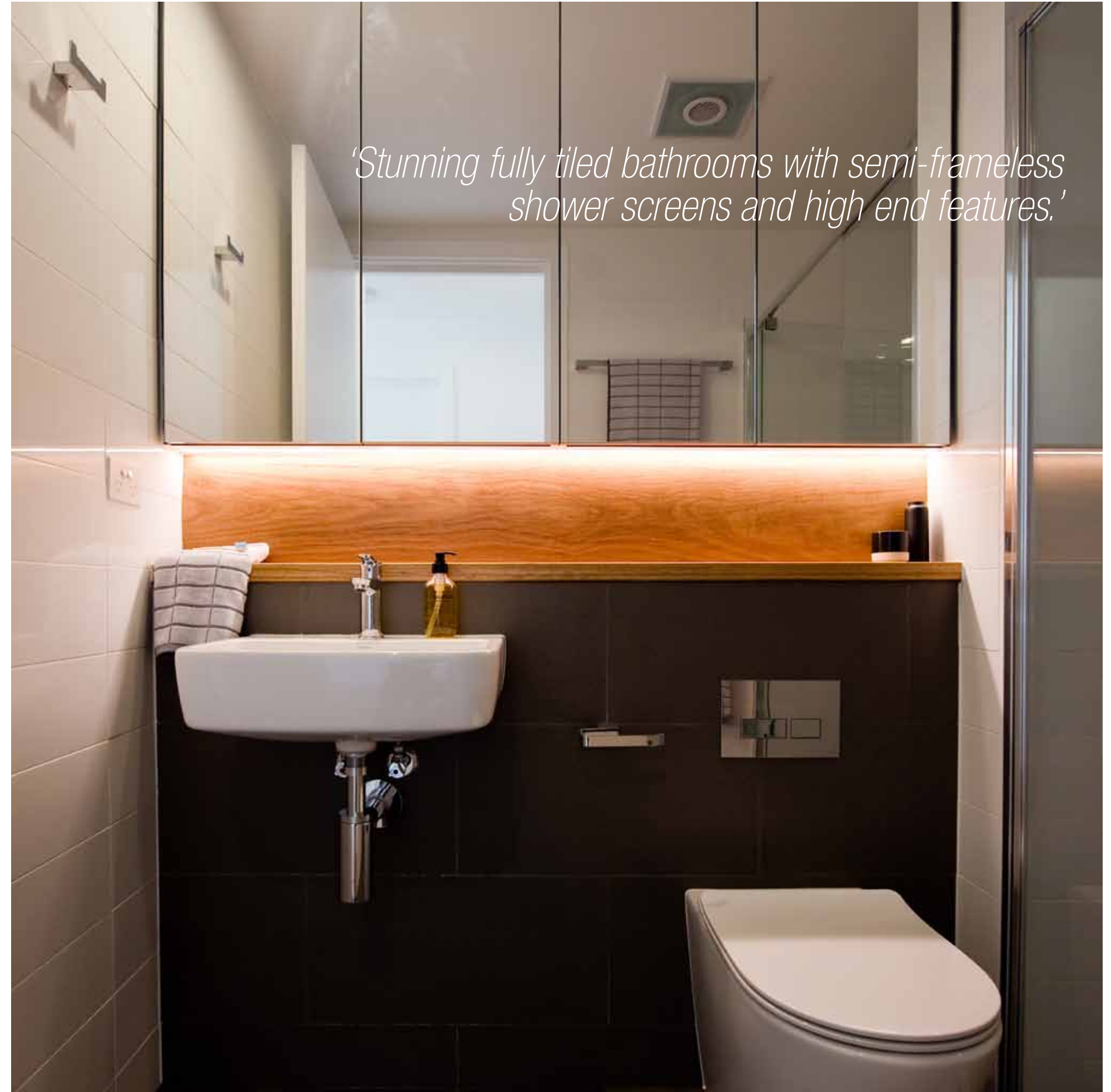
*'functionally FINISHED'*



*'The building's design takes advantage of attractive views to the surrounding Brisbane landscape.'*

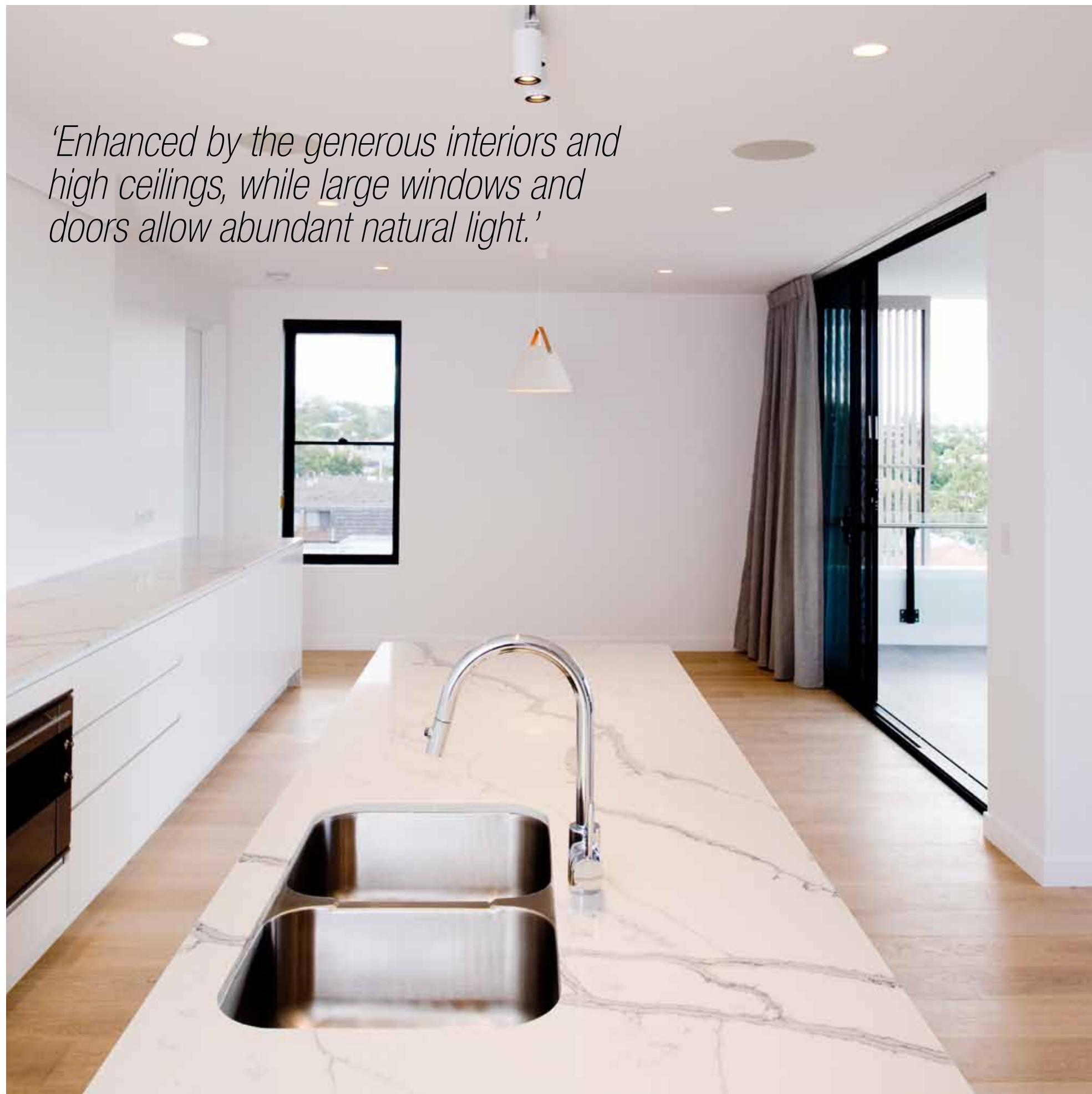


*'modern and SLEEK'*



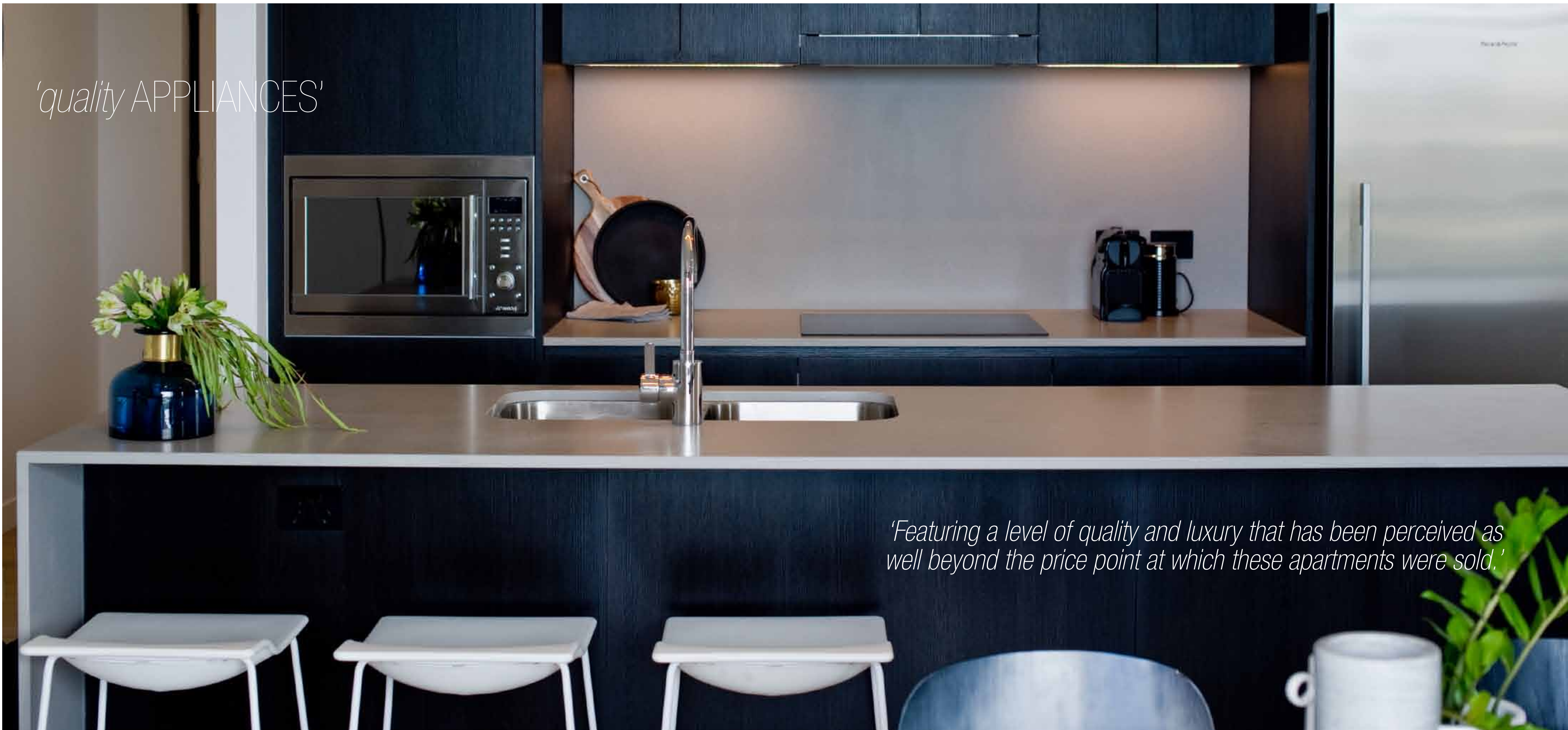
*'Stunning fully tiled bathrooms with semi-frameless shower screens and high end features.'*

*'Enhanced by the generous interiors and high ceilings, while large windows and doors allow abundant natural light.'*



*'perfect LOCATION'*

*'quality APPLIANCES'*



*'Featuring a level of quality and luxury that has been perceived as well beyond the price point at which these apartments were sold.'*

*'Arc's contemporary residential architectural statement, with a strong focus on subtropical design, reflects the architectural themes and materials of the area.'*

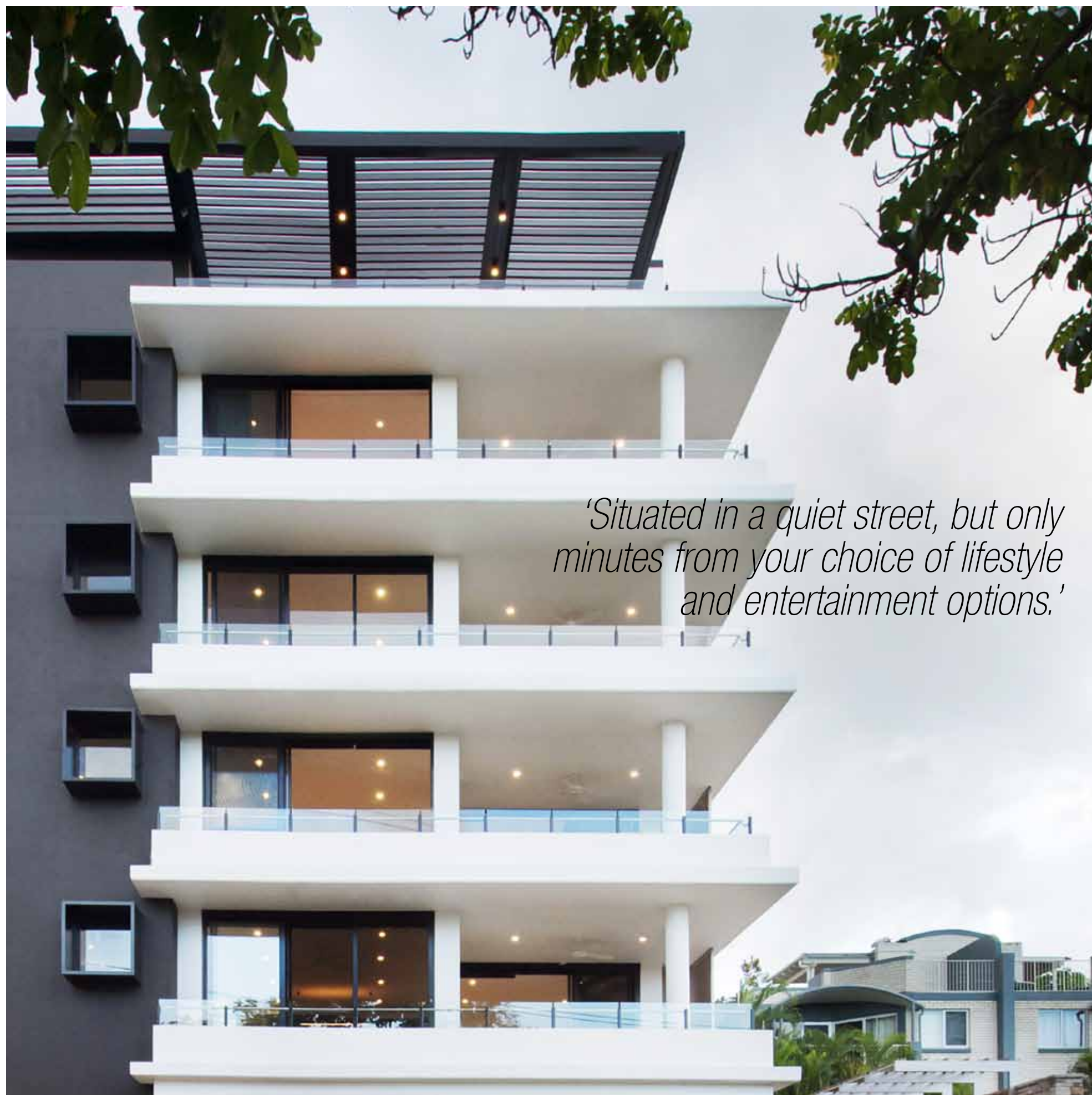


*'abundance of*  
NATURAL LIGHT'



*'The apartments are 20 per cent larger than other comparable product in the market and incorporate high-quality finishes as standard.'*





*'Situated in a quiet street, but only minutes from your choice of lifestyle and entertainment options.'*

PROUDLY *developed and constructed by*



[p 1300 336 989](tel:1300336989) or [07 3171 2270](tel:0731712270) [f 07 3171 2217](tel:0731712217) [e info@mosaicproperty.com.au](mailto:info@mosaicproperty.com.au)  
[address](#) 84 Latrobe Terrace, Paddington Q 4064  
[postal](#) PO Box 526, Paddington Q 4064  
[w mosaicproperty.com.au](http://mosaicproperty.com.au)



